



PRODUCT GUIDE



RAMPART
WE EQUIP YOUR MISSION

CANADA'S LEADING SUPPLIER OF OPERATIONAL EQUIPMENT

WE EQUIP YOUR MISSION

Rampart is Canada's leading single source provider of **operational equipment**. We offer access to the largest selection of products and brands, world-class subject matter experts, and industry-leading customer service.



EQUIPMENT SOLUTIONS

Our experts are committed to serving the end-user with the world's best products.

If you're unsure of what you need, our experts work with you to find the right solution.



CUSTOMER SERVICE

Our top priority is to provide the highest level of customer service.

Our team is dedicated to providing on time, on budget, on target solutions.



SUBJECT MATTER EXPERTISE

We have subject matter experts who can help and assist every step of the way.

From initial request, to post-contract delivery, warranty, repair and anything else that might come up.

WHO WE SERVE

- ✓ **Military** *All branches*
- ✓ **Police** *Federal, provincial and municipal*
- ✓ **Corrections**
- ✓ **Wildlife & Conservation**
- ✓ **Armed Government Services**
- ✓ **Public Safety & Security**
- ✓ **Wildland Fire**



PERFECTION

Rampart is proud to be the exclusive provider of GLOCK firearms to Military and Law Enforcement in Canada.

WE CAN MEET EVEN THE MOST CHALLENGING MISSION REQUIREMENTS.

BRING US YOURS.

CONTACT US TODAY

Speak to a specialist now: **1-855-729-0446**

Email us: **support@rampartcorp.com**

Online: **www.rampartcorp.com**

RAMPART RANGE DAY

CANADA'S PREMIERE RANGE DAY AND EXPO
FOR MILITARY AND LAW ENFORCEMENT

GET HANDS-ON WITH THE LATEST TACTICAL
EQUIPMENT

- ✓ OVER 70 VENDORS
- ✓ LIVE-FIRE RANGES
- ✓ DEMONSTRATIONS & TRAINING
- ✓ COFFEE & LUNCH PROVIDED

RSVP NOW
RAMPARTCORP.COM/RANGEDAY

NOTE: ATTENDEE ACCESS TO RANGE DAY IS LIMITED
TO ACTIVE SERVING MILITARY, LAW ENFORCEMENT,
& CORRECTIONS PERSONNEL



HOSTED BY
RAMPART
WE EQUIP YOUR MISSION

RAMPART



SAVE ON SOME OF OUR TOP BRANDS



Aimpoint **ASP**

CARINTHIA

...AND MANY MORE



MILITARY



LAW ENFORCEMENT
& CORRECTIONS



GOVERNMENT



EMS & FIRE

SIGNUP FOR FREE
RAMPARTCORP.COM/SHIELD

OUR QUEST

INNOVATIVE DESIGN
FLAWLESS FUNCTION
UNPARALLELED SERVICE

In the demanding world of law enforcement there is little room for error. Performance is paramount. Failure is not an option. Among the men and women of this specialized profession, the name ASP is synonymous with quality. These are individuals who place their personal safety at risk each and every day in the protection of others. That these dedicated men and women prefer ASP products above all others is something of which we are extremely proud.

For over four decades, the distinctive ASP insignia has stood for innovative design, flawless function and an unparalleled standard of service.

Today ASP manufactures five distinct categories of products. Each is unique . . . the result of cutting edge design, advanced manufacturing technologies and exhaustive field evaluations. This is a product line so advanced that it is protected by over 150 patents.

From the beginning, the ASP Eagle has reflected an uncompromising standard of craftsmanship. Throughout the world, ASP remains the first choice of quiet professionals. In this catalog, you will find products of distinction built to a singular standard of quality. For those who cannot afford less. ASP . . . protecting those who protect.



Kevin Parsons, PhD
Chairman & CEO

ISO 9001:2015



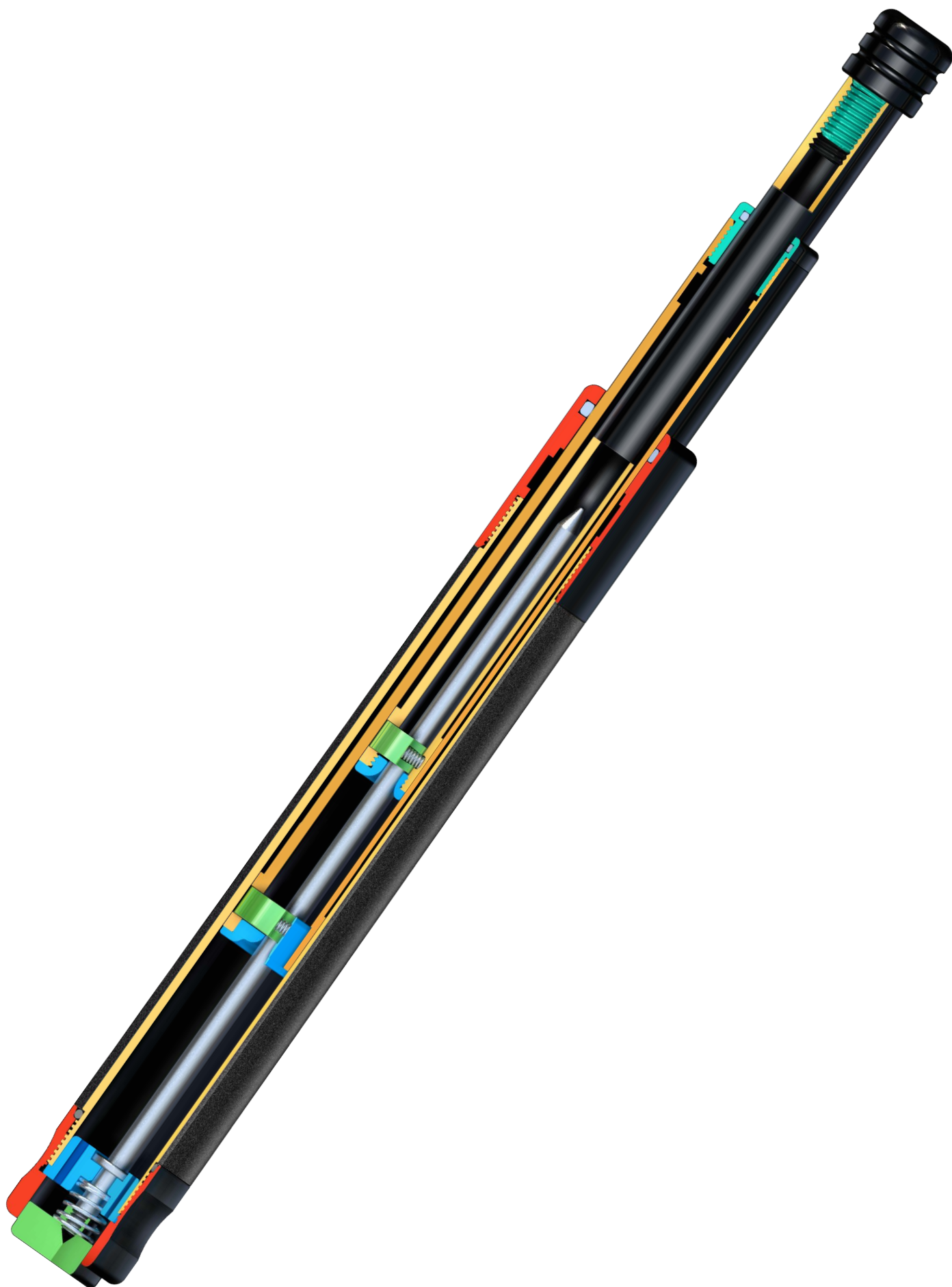
A Collection Of Products That Work As One System

BATONS	4	11	Friction
		14	Talon
		18	Sentry
		21	Concealables
		25	Fusion
		27	Attachments
		33	Scabbards
RESTRAINTS	40	47	Chain
		51	Hinge
		55	Rigid
		59	Identifier
		63	Ankle
		64	Cases
		70	Transport
		75	Keys
		78	Tri-Fold
LIGHTING	82	86	Comparison Chart
		95	Sapphire
		98	Dot
		101	Raven
		102	Pharos
		105	Scribe
		106	Garda
		108	Sentinel
		110	Tungsten
		112	Pro
		114	Poly
		116	Triad
		119	Spectrum
		121	Griffin
		123	Raptor
		125	Tactical
		126	TLC
		129	Power
		131	Accessories
OC	134	139	Palm Defenders
		139	Key Defenders
TRAINING	142	147	Training Bags
		148	Training Batons
		151	Training Restraints
		155	Red Guns
		157	Support
		158	Belt Keepers
		159	Pocket Tools
		162	Portation
		164	Blue Line
		166	Insignia

BATONS

EXPAND YOUR ADVANTAGE





SELECTING YOUR ASP BATON

88 models of ASP Batons assure the perfect match between product and mission. From Locking System to Length, you will find an ASP design that fits your specific requirement. Each series is available with Grips, Shafts and Attachments that will make your job safer.

LOCKING SYSTEM

Choose between the proven excellence of the original Friction or the simplicity, reliability and fluidity of the Talon.

LENGTH

F16, 21 and 26 or T40, 50 and 60 professional batons allow you to select the compromise between ease of carry and impact potential that best fits your needs.

SHAFT

The portability of Airweight, low profile of Black Chrome, brilliance of Chrome and corrosion resistance of Electroless make it possible to match your baton to the operational environment.

GRIP

The cushioned hold of Foamed Vinyl, the molded-on durability of DuraTec, the increased retention of Wavemaster, the control of Vector and the economy of Sentry provide five distinct, yet effective grips.

CAPS

Whether improving retention, increasing striking potential or adding a mark of distinction to your baton, all caps are an integral part of the ASP system. Each is compatible with over three million ASP Batons in use throughout the world.

ATTACHMENTS

Auxiliary features may be seamlessly added to your ASP Baton. Whether facilitating carry, adding illumination, improving visibility or aiding entry, these attachments are easily installed to enhance your tactical advantage.

“ASP originated the concept of the modern expandable baton. They continue to out-innovate all others.”

11



FRICITION

14



TALON

18



SENTRY

21



CONCEALABLES

25



FUSION

27



ATTACHMENTS

33



SCABBARDS

LOCKING SYSTEM



FRICTION



TALON

LENGTH



SHAFT



AIRWEIGHT



BLACK CHROME



CHROME

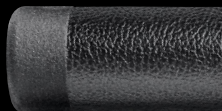


ELECTROLESS

GRIP



FOAM



DURATEC



WAVEMASTER



SENTRY



VECTOR

CAPS



PRESTIGE LOGOS



LOGO CAP

F SERIES | 541__



BAND CAP	BLUE	GOLD	PINK	SILVER
F SERIES	52900	52100	51000	52300
T SERIES*	52901	52902	52903	52904



GRIP CAP

F SERIES | 52933

T SERIES* | 52935



LEVERAGE CAP

F SERIES | 52921

BATON MODELS

ASP product codes are systematic and easily distinguished. The first letter (F or T) is the Locking System. The next two digits (16, 21, 26 or 40, 50, 60) are the Length. The next letter (A, B, C, E) is the Shaft. The final letter (D, F, W, V) is the Grip.

LOCKING
SYSTEM

F

SHAFT

B

LENGTH

21

GRIP

F



Airweight offers a 45% weight reduction with 98% of the striking potential of steel.



Black Chrome provides the most durable and corrosion resistant black baton finish available.



Chrome delivers a high lustre finish for increased visibility under low light conditions.



Electroless is the most corrosion resistant finish. It is well suited to high humidity environments.

ATTACHMENTS



TACTICAL | 35636



TACTICAL T* | 35637



FUSION T* | 35638



NEXUS | 52931



NEXUS T* | 52932



BREAKAWAY TIP

A SERIES | 52944

T SERIES | 52940



BREAKAWAY

F SERIES | 52923



WRIST STRAP CAP

F SERIES | 52914



MIRROR & CASE | 52470

** Compatible with button release batons only*



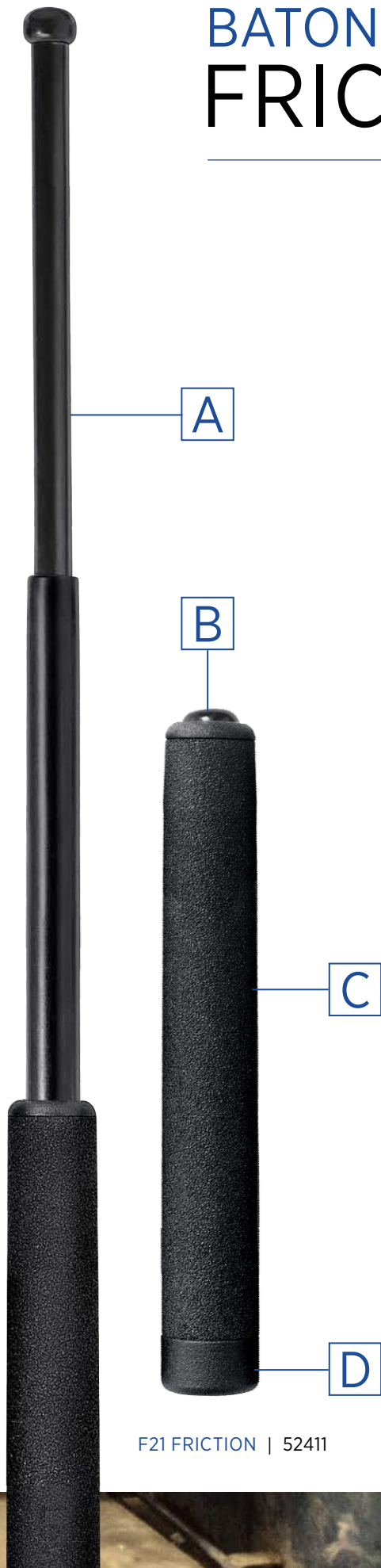
BATONS FRICTION

IMPACT RELEASE

The ASP Friction Baton is the most tactically sophisticated impact weapon currently available to law enforcement personnel. Tested by the most elite federal teams, the Friction has proven itself “virtually indestructible.” This is the first choice of the world’s most tactically advanced law enforcement agencies.

ASP Friction Batons have a proven record of performance. They are strong, dependable and readily at hand. Friction Batons are constructed of proprietary 4140 steel and 7075 aluminum tubing available exclusively from ASP. The result is a series of batons unlike any other. Impact weapons that are forged to a standard of quality that is as tough as the job.

- A Heat Treated Shafts
- B Impact Forged Tip
- C Three Grip Options
- D Attachment Platform



F21 FRICTION | 52411





FRICTION SERIES

On the street, there can be no tolerance for second best. It is here that the nation's most respected and tactically advanced law enforcement agencies trust their safety to ASP Friction Batons. An intermediate force system of uncompromising quality from a firm with a long tradition of agency service.

Under the most severe tactical conditions, Friction Batons have proven themselves virtually indestructible. Easily carried. Readily at hand. Unparalleled psychological deterrence. Devastatingly effective. ASP . . . when you cannot afford less.



FOAM

F16 FRICTION | 52211



DURATEC

F21 FRICTION | 32411



WAVEMASTER

F26 FRICTION | 42611

FRICTION		16			21			26			16			21			26		
		FOAM GRIP			DURATEC GRIP			WAVEMASTER GRIP											
AIRWEIGHT*	AF	52212	52412	52612	AD	32212	32412	32612	AW	42212	42412	42612							
BLACK CHROME	BF	52211	52411	52611	BD	32211	32411	32611	BW	42211	42411	42611							
CHROME	CF	52210	52410	52610	CD	32210	32410	32610	CW	42210	42410	42610							
ELECTROLESS	EF	52213	52413	52613	ED	32213	32413	32613	EW	42213	42413	42613							

* Airweight Batons weigh 45% less than steel models.



BATON ACCESSORIES



LEVERAGE CAP | 52921
SEE PAGE 28



SIDEBREAK 21 | 52432
SEE PAGE 34

NEW BATONS TALON

MANUAL RELEASE

The elegance of any design is measured by the quality and simplicity of its parts. In this baton you will find the premium materials, exceptional workmanship and flawless function of ASP. These are all combined in a push button design with minimal parts. While others are content to introduce new variations, the Talon produces a new standard. This is a baton with quality, durability and performance in every detail. It is the next generation of intermediate force.

This revolutionary new Infinity design uses a single locking disc that cams into an internal groove which is machined into each tube. Lockout is simple, stable and secure. Positive expansion complements push button release.

Elegantly simple. Incredibly strong. Easily carried. Rapidly deployed. Extended tip expansion. Push button retraction. A new standard of convenience. The Talon Baton from ASP.

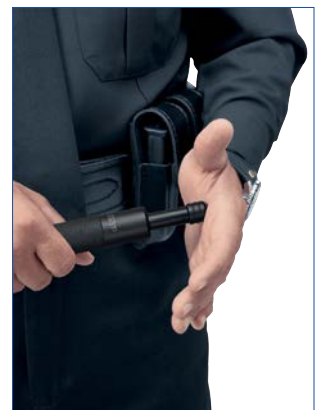
- A Heat Treated Shafts
- B Impact Forged Tip
- C Foamed Vinyl Grip
- D Push Button Release



T50 TALON | 22411



PUSH



CLOSE





NEW TALON SERIES

ASP Talon Batons are the most technically advanced manual release impact weapons currently available to the law enforcement community. Internal discs provide solid, robust lockout. Extension is rapid and positive. A simple press allows a smooth, one hand release. The baton can be positioned, retracted and secured in a scabbard in one fluid motion.

Easily carried and readily available, ASP Batons have an incredible psychological deterrence and unparalleled control potential. The premium materials, exceptional workmanship and flawless function of the ASP Baton set it apart from all others in quality, durability and performance. In every detail, this is the finest impact weapon produced.

INFINITY GUARANTEE

We will repair or replace your ASP Talon Infinity Baton at no charge to you in the event that it is ever damaged or fails to function. If we cannot repair your baton, we will replace it with a new model that is in perfect working condition. It doesn't matter what happened, how it happened, whose fault it was or where you purchased the baton.



T40 TALON | 22211



T50 TALON | 22434



T60 TALON | 22611



BUTTON RELEASE



CAP RELEASE

TALON

AIRWEIGHT*

BLACK CHROME

ELECTROLESS

AIRWEIGHT*

BLACK CHROME

ELECTROLESS

FOAM

VECTOR

BUTTON

40

50

60



CAP

40

50

60



22212 22412 22612

22211 22411 22611

22230 22430 22630

22232 22432 22632

22234 22434 22634

22236 22436 22636

FOAM

VECTOR

22214 22414 22614

22213 22413 22613

22231 22431 22631

22233 22433 22633

22235 22435 22635

22237 22437 22637

* Airweight Batons weigh 45% less than steel models.



HRT | 52941

The optional Human Rights Tip (HRT) is overmolded with soft polymer.



BATON ACCESSORIES



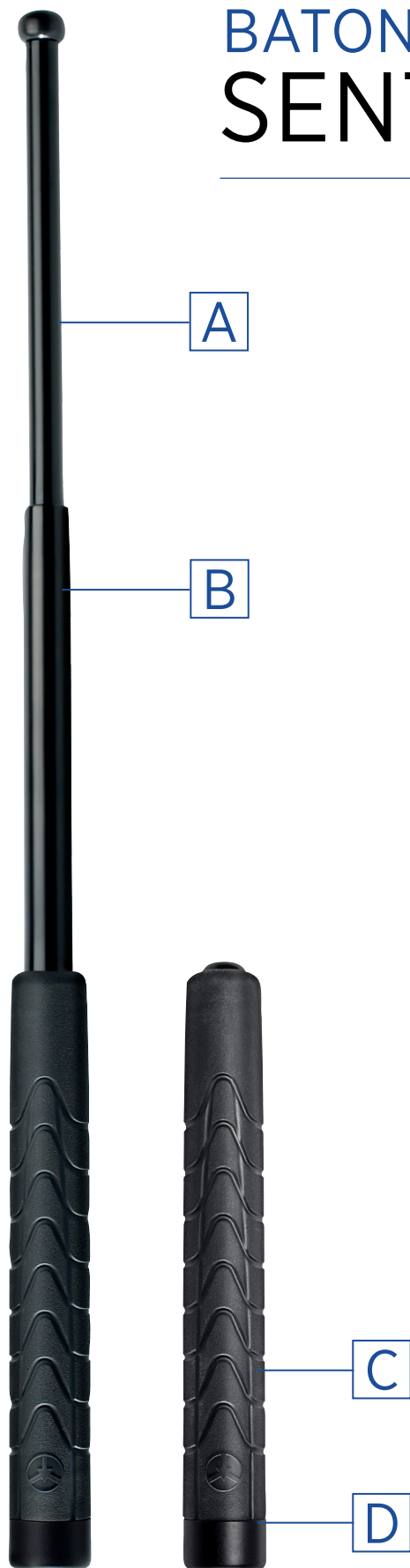
GRIP CAP T | 52935
SEE PAGE 28



ENVOY 50 | 52446
SEE PAGE 35

BATONS

SENTRY



S21 SENTRY | 52400

A NEW SENSE OF SECURITY

The distinctive Strike Force grip of the Sentry Baton is complemented by 4130 steel shafts and a black chrome finish. The Sentry Baton has an aluminum base retaining clip.

Function of the Sentry Series is identical to that of ASP 4140 Friction Batons. The design accepts all ASP Logo, Grip and Leverage caps. The Sentry is compatible with ASP BreakAway, Nexus Subcap and Tactical attachments. Sentry Batons may be carried in SideBreak or Federal Scabbards.

The 60 durometer Santoprene handle of the Sentry Baton provides a firm grip under the most adverse conditions. Designed for the security professional, the Sentry Series offers a moderately priced alternative to ASP Friction (4140) expandables.

- A 4130 Steel Shafts
- B Black Chrome Plating
- C Injection Molded Grip
- D Aluminum Base Retaining Clip

SENTRY



52200 52400 52600



NO
(food, b
OR L
po
Fox C



BATONS CONCEALABLES

CONVENIENTLY CLIPPED

Protector P12, P16 and P21 Batons provide administrators, investigators and undercover operators with an Every Day Carry (EDC) Friction Baton. Each expandable design provides easily concealed striking power. These are easy carry batons with the world class striking potential of an ASP impact weapon. Each is fabricated using proprietary materials and manufacturing techniques. They are finished using premium industrial coatings. Each P Series Baton is produced to the same standard of quality that has been adopted by police professionals in over 100 countries around the world.

Agent Batons expand to 30, 40 or 50 cm. They have the form, fit and striking potential of a duty baton. The reduced diameter and low profile grip of the Agent may be concealed inside the waistband or worn on a dress belt. The Nexus Clip may be adjusted to a variety of positions along the handle to enhance concealment or ease of presentation. Agent Batons can be carried tip up or tip down. As with all ASP Talon Batons, the Agent is retracted with a simple push of the cap.

- A Heat Treated Shafts
- B 7075 T6 Aluminum
- C Crosstec Knurling
- D Adjustable Nexus Clip



P21 PROTECTOR | 52227

A50 AGENT | 52224



PROTECTOR
IMPACT CLOSE



AGENT
MANUAL CLOSE



PROTECTOR SERIES

The impact close P12, P16 and P21 are easily concealed. A 4140 striking surface is combined with a forged to shape 7075 T6 aluminum middle shaft and precision machined handle. The grip is fine line, Crosstec knurled with spiral micro grooves. The grooves accept a Nexus baton clip. Batons can be carried tip up or tip down. The clip can be adjusted to a variety of positions along the handle to enhance concealment or ease presentation. Whatever the activity, these batons are easily carried and rapidly presented. A constant companion for control and defense.



P12 PROTECTOR | 52221



P16 PROTECTOR | 52222



P21 PROTECTOR | 52227



NEW AGENT SERIES 

The manual close Agent Batons are a combination of discreet concealment and rapid presentation. They are an ideal impact weapon for administrators, investigators and undercover operatives. The batons incorporate a 4140 steel striking surface. The 7075 T6 aluminum middle shaft and handle are forged to shape and then precision machined. The grip is fine line, Crosstec knurled with spiral micro grooves. Grooves accept a Nexus baton clip. Agent Batons carry the Infinity Guarantee.

	A30	A40	A50
AIRWEIGHT*	52220	52223	52224
STEEL	52260	52261	52262

* Airweight Batons weigh 45% less than steel models.



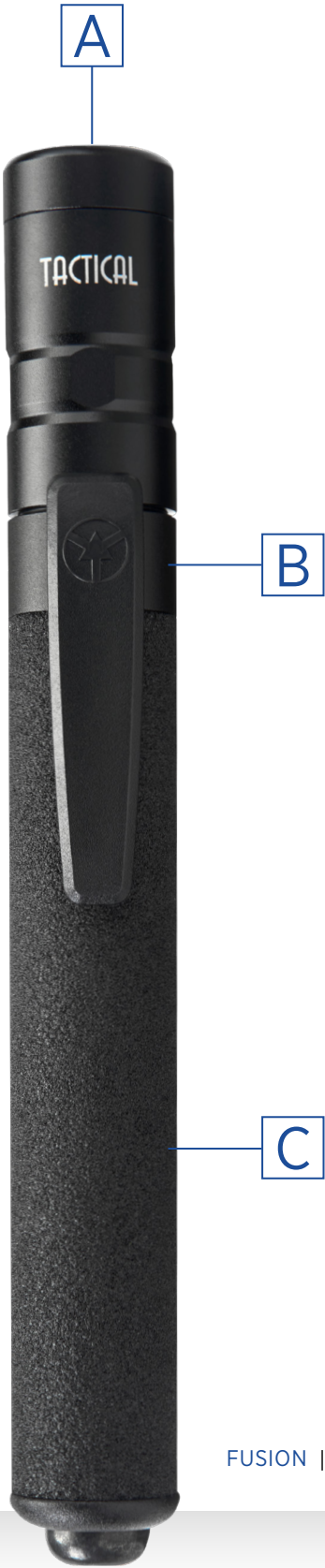


BATONS FUSION

COMPOUND DEFENSE

Fusion Batons combine three essential law enforcement tools into a compact, easily carried, readily deployed tactical package. An ASP Expandable Baton (F16 or T40) is mated with a high intensity LED flashlight and Nexus Clip. The multi-functional design provides improved control and enhanced handling characteristics.

- A Tactical Flashlight
- B Nexus Clip
- C Expandable Baton



FUSION T | 22216



Lights charge using the included Retractable.

FUSION | 52226

	FUSION	FUSION T
AIRWEIGHT*	52225	22215
STEEL	52226	22216

* Airweight Batons weigh 45% less than steel models.



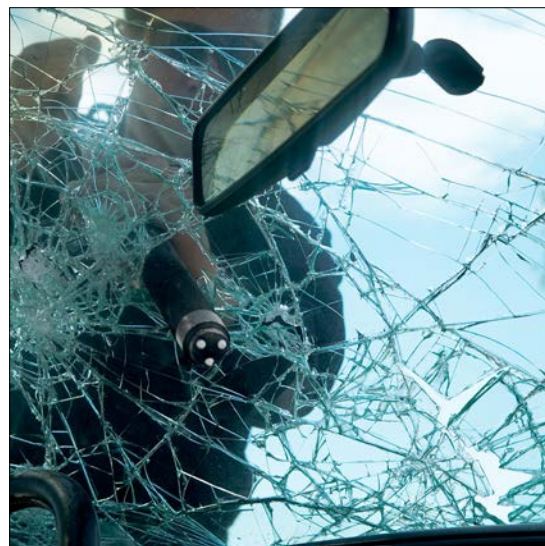
BATONS ATTACHMENTS

ALWAYS READY

Tactical attachments are compatible with over three million ASP Batons in service throughout the world. These are unique accessories that fill specific needs. Each is designed, tested and manufactured to be an integral part of the total ASP system.

A cap to enhance retention or impact potential. An accessory to add light. A tool to gain entry. An insignia to add distinction. Each ASP attachment is built with the same old world craftsmanship and attention to detail as your Tactical Baton.

- A Ground Ceramic Pins
- B Precision Geometric Dome
- C Cap Release O-Ring
- D Mounts to any F Series Baton



BREAKAWAY | 52923



ATTACHMENT SERIES

NEW GRIP CAPS

Grip Caps enhance baton retention while adding anti-roll stability when batons are not in use.



GRIP CAP

F SERIES | 52933

T SERIES* | 52935

LEVERAGE CAP

This design locks the baton in the officer's hand improving retention and control of a Friction Baton.

More importantly, this unique cap transfers the fulcrum of the baton to the little finger, increasing both speed to target and impact potential. With the Leverage Cap installed, an F16 has the impact of an F21. An F21 strikes like an F26.



LEVERAGE CAP

F SERIES | 52921

LOGO CAPS

Available with 66 standard Prestige insignias. Custom die struck medallions are available for individual agencies and teams.



LOGO CAP

F SERIES | 541__

BAND CAPS

A unique accent to ASP Batons, Band Caps are distinctive, yet low profile.



NEW BAND CAP BLUE GOLD PINK SILVER

F SERIES 52900 52100 51000 52300

T SERIES* 52901 52902 52903 52904

* Compatible with button release batons only



PRESTIGE LOGOS

Fold out the back cover. Combine the first three numbers of the Logo Cap with the two numbers of the desired Prestige Logo.

CUSTOM LOGOS

Distinctive insignias are available in Brass, Nickel Silver or color fill. They may be die struck on request for individual agencies or divisions. Custom Logos are available at no additional charge with a combined order for 20 Logo Caps, Guardian Keys (Page 76) and Logo Belts (Page 158).



BREAKAWAY (F SERIES)

BLACK | 52923

ELECTROLESS | 52922

BREAKAWAY TIP

NEW A SERIES | 52944

T SERIES | 52940



BREAKAWAYS

Subcaps are designed to be interposed between the cap and handle of a Friction Baton. It is always available and readily at hand. Removing the baton cap exposes the three ceramic pins of the BreakAway. Set in a machined aluminum geodome, at least one pin will make contact with the tempered glass of a car window whatever the striking angle. The officer can stand to the side of a threat, grasp the tip of the baton and easily shatter any vehicle window. Entry is rapid and tactically sound.

The BreakAway Tip provides a safe means of keeping a vehicle entry tool readily at hand. The diminutive design replaces the standard tip of an Agent or Talon Baton. Removing the tip cover exposes a ground ceramic pin that can break a side window or punch an entry circle in a windshield.

WRIST STRAP CAP

Designed for mounted units. The stainless steel cap incorporates a breakaway wrist strap and adjustable ball slide.



WRIST STRAP CAP

F SERIES | 52914



TACTICAL MIRROR

Easily carried in the pocket and rapidly attached to an ASP Baton. Tactical Mirrors are ideal for drug search and room clearance operations. The mirror allows an officer to see around corners without presenting a target. In addition, it is an ideal means of looking into areas without risking exposure to hidden needles. The Tactical Mirror is available individually or with a fitted case.



MIRROR | 52471

MIRROR & CASE | 52470



NEXUS SUBCAP | 52931



NEXUS T CAP* | 52932

NEXUS

The Nexus Subcap and Nexus T Cap provide secure, lightweight clip-on retention of all ASP Batons. The design is compact and easily installed. Batons are conveniently carried and rapidly presented. The subcap allows additional ASP accessories to be mounted on the baton.

BATON LIGHTS

The Tactical, Tactical T and Fusion T are easily attached to any ASP F or T Series Baton. Each light produces 180 lumens of brilliant white illumination. Powered by a custom Lithium-ion power cell, they are micro USB rechargeable. The TIR reflector is compact and optically precise. The intermittent or constant switch is positive and secure. The lights are tough, bright and always at hand.



Lights charge using the included Retractable.



Baton lights attach to any of the 3 million ASP Batons in service worldwide.



TACTICAL | 35636



TACTICAL T* | 35637



FUSION T* | 35638

** Compatible with button release batons only*



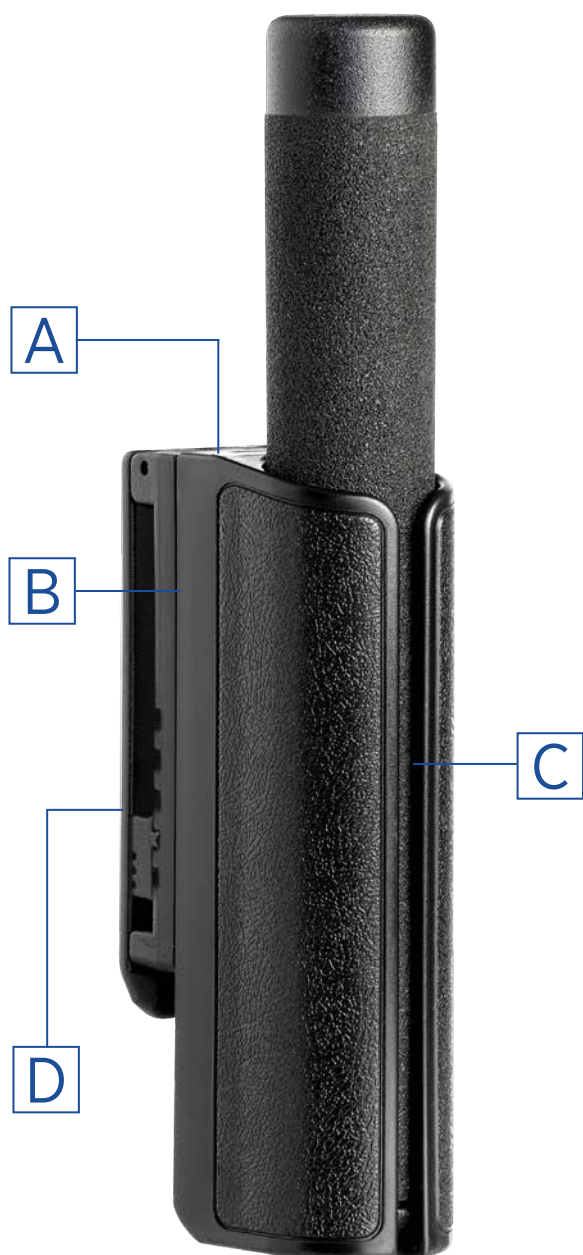
BATONS SCABBARDS

SECURE RETENTION, INSTANT ACCESS

Protection. Portation. Presentation. The three criteria of any baton scabbard. Each carrier must define a compromise between security and speed of presentation. It must provide a level of protection without compromising access. The case must secure the baton without hindering deployment.

ASP Scabbards allow a firm grip and rapid presentation. Each design is fabricated for a specific purpose. Designs so unique that they are patented. Under the most severe tactical conditions, they have no equal.

- A Rotating Body
- B Internal Retention Clip
- C SideBreak Shaft Release
- D Snap-Loc Belt Loop



SIDEBREAK 21 | 52432



180° Rotation



SIDEBREAK SCABBARDS

The SideBreak Scabbard is the foundation of the ASP gallery of baton carriers. The SideBreak rotates to 7 distinct positions or may be locked upright on the duty belt. A retracted or expanded Friction Baton may be rapidly presented, yet is securely retained during dynamic confrontations. Expanded batons may be presented out the side of the carrier.



SIDEBREAK 21 | 52432

SIDEBREAK	16	21	26
BLACK	52232	52432	52632
BASKETWEAVE	52233	52433	52633
BALLISTIC	52235	52435	52635
ASPTEC	52234	52434	52634

PADDLE			
BLACK	52236	52436	52636



Black

Basketweave

Ballistic

ASPtec



SIDEBREAK PADDLE 21 | 52436

FEDERAL SCABBARDS

A compact, reduced form carrier for the Friction Baton. The Federal Scabbard is designed for those officers who prefer a closed front, open bottom ASP carrier. The scabbard adjusts to a variety of belt widths from 1.25 to 2.25 inches and MOLLE. It will retain a retracted or extended ASP Friction Baton.



FEDERAL PADDLE 21 | 52439



FEDERAL 21 | 52438

FEDERAL	16	21	26
BLACK	52238	52438	52638
PADDLE			
BLACK	52239	52439	52639

ENVOY SCABBARDS

The Envoy Scabbard rotates to 7 distinct positions on the duty belt. It will not rotate beyond horizontal or compromise the security of a baton. A retracted Talon Baton may be rapidly presented, yet it is securely retained during dynamic confrontations.



ENVOY PADDLE 50 | 52447



ENVOY 50 | 52446

ENVOY	40	50	60
BLACK	52246	52446	52646
PADDLE			
BLACK	52247	52447	52647

NEW REVOLUTION SCABBARDS

The rotating hood of Revolution Scabbards protects the cap and grip while securing a Talon Baton in the carrier. The flexible cover may be rapidly displaced to allow presentation of the baton. It is easily repositioned to lock the baton in place.



T SERIES	40	50	60
BLACK	52263	52463	52663



REVOLUTION 50 | 52463

DUTY SCABBARDS

These “soft” design carriers are ideal for investigative and security personnel. The scabbard clips onto the belt and securely cases a retracted or expanded Infinity Baton.



DUTY 50 | 52459

A SERIES	30	40	50
BALLISTIC	52244	52444	52644
T SERIES	40	50	60
BALLISTIC	52259	52459	52659

NEW COVER SCABBARDS

These protective cases are ideal for military and security personnel. The scabbard positions the baton handle under the hood to maintain a low profile.



T SERIES	40	50	60
BALLISTIC	52279	52479	52679

COVER 50 | 52479

NEW COVERT SCABBARDS

These top grain leather scabbards slide onto the dress belt to carry and conceal a retracted baton.



HORIZON
A SERIES | 35656
T SERIES | 35657



ESCORT
A SERIES | 35658
T SERIES | 35659

COMBO CASES

ASP Combination Cases hold an Infinity Baton and related accessories. They are compact clip-on carriers that are convenient, low profile and secure.

The Duo case secures an Agent Baton and Tungsten light.

Baton & Cuff Cases hold an Agent or Talon Baton with a Chain or Hinge Cuff.

The BRL carrier positions an Agent Baton, Tri-Fold Restraint and Tungsten light on a plainclothes belt.



NEW DUO CASE | 35660



NEW AGENT & CUFF CASE | 35653

NEW TALON & CUFF CASE | 35654



NEW BRL CASE | 35655

NEW AGENT BELT

The custom buckle of the Agent Belt is distinctive and functional. It holds the apex of the belt in place without the need of a retention loop. The body of the Agent is constructed from two lamination bands of top grain leather that are sewn together for durability. The transitional design offers the appearance of a dress belt with the durability and support of a 2.25 inch duty carrier.



AGENT BELT	SMALL (28-30)	MEDIUM (32-34)	LARGE (36-38)	XLARGE (40-42)	XXLARGE (44-46)
BLACK	12001	12002	12003	12004	12005
BROWN	13001	13002	13003	13004	13005



Shown with Horizon Scabbard



BLACK BUCKLE | 12025



BRASS BUCKLE | 12026

Interchangeable buckles are available for the Agent Belt.

RESTRAINTS

UNPARALLELED CONTROL POTENTIAL





SELECTING YOUR ASP RESTRAINTS

It has been called the greatest handcuff advance of this century. The ASP Restraint System. A fusion of innovative design, advanced materials and cutting edge technology. The result of an exhausting eight year design effort. A system with real world features. A restraint series that has set a new standard for safety and security.

FRAME

Ultra Cuffs have a hammer forged 7075 T6 frame that is both rigid and incredibly strong, yet is lightweight. The cuffs have radiused edges that reduce soft tissue injuries. They are hardcoat anodized.

MODEL

Chain, Hinge and Rigid restraints are available in both steel and aluminum configurations. Chain, Hinge and Rigid Identifier restraints are stocked in four standard colors. All ASP Handcuffs are produced with one, two, three or slip pawl Lock Sets.

BOW

Whether in high carbon steel or forged aircraft aluminum, the high contact bow has fully radiused edges, deep set teeth and the largest span of locking positions in the industry.

The laser engraved serial number of ASP Handcuffs identifies the date of manufacture. Agency or individual identification can be engraved on the bow or frame.

LOCK SET

Tactical (one pawl), Security (two pawl), European (three pawl) and Training (slip pawl) Lock Sets are color coded and interchangeable. Lock assemblies are extremely smooth with dual-sided stainless steel keyways and high visibility double lock indicators. Both double and single locks release by turning the key in one direction.

"ASP has introduced the greatest handcuff design innovation of this century."



47
CHAIN



51
HINGE



55
RIGID



59
IDENTIFIER



63
ANKLE



64
CASES



70
TRANSPORT



75
KEYS



78
TRI-FOLD

MODEL



CHAIN



HINGE



RIGID

BOW

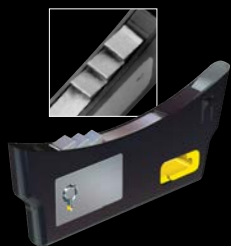


STEEL



ALUMINUM

LOCK SET



TACTICAL (1 Pawl)

The high visibility single pawl Lock Set is both strong and shim resistant.



SECURITY (2 Pawl)*

The two pawl divider plate design is virtually impossible to pick.



EUROPEAN (3 Pawl)

Three independent pawls provide an extra measure of security against shimming.

** Provided with proprietary handcuff key.*

COLOR



BLUE

GRAY

PINK

YELLOW

KEYS



G1 | 563__

G2 | 568__



Black

Stainless

Gold

Copper

Brass



PRESTIGE LOGOS



LOCKWRITE CLICK | 56254



LOCKWRITE TWIST | 56240



Gold

Black

Silver



S1 | 56252

S2 | 56253

CLIP | 56250



INVESTIGATOR | 56209

PENTAGON (12) | 56523



EDGE | 56259



AUTOKEY | 56256



RESTRAINTS

CHAIN

LINEAR AND LATERAL MOBILITY

ASP Chain Ultra Cuffs provide a major advance in both the design and construction of wrist restraints. Frame geometry is the result of extensive computer modeling and simulation analysis. Strength potential has been maximized through the use of a 7075 T6 forged aluminum frame. The Lock Set is unitized and replaceable.

- A Flat Contact Surface
- B Keyway on Each Side
- C High Visibility Double Lock Indicator
- D Hand Welded Stainless Chain



STEEL CHAIN | 56109



CHAIN SERIES

ASP Chain Handcuffs were designed in the field. Input came from officers and Instructors in over 100 countries where ASP currently conducts training. As a result, this ASP design incorporates the practical features most requested by officers on the street. A stainless steel handcuff that weighs less than standard designs.

Both steel and optional aluminum bows are highly radiused to prevent injury. A flat contact bow improves application.

Complex “keyhole up” training procedures are no longer necessary. There is a keyway and double lock slot on each side of each restraint. A double lock warning bar is readily visible. Both double and single locks are released by turning the key in a single direction.

The frame geometry, deep set teeth and precision smooth action eliminate the need for backloading. Lock Sets are readily replaced.



STEEL | 56109



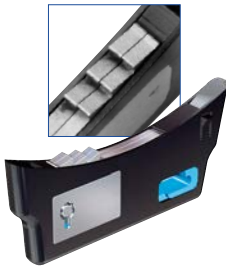
ALUMINUM | 56110

Aluminum handcuffs weigh 15% less than steel models and are distinguished by black bows.

REPLACEABLE LOCK SETS



TACTICAL (1 Pawl)
The high visibility single pawl Lock Set is both strong and shim resistant.



SECURITY (2 Pawl)*
The two pawl divider plate design is virtually impossible to pick.



EUROPEAN (3 Pawl)
Three independent pawls provide an extra measure of security against shimming.

** Provided with proprietary handcuff key.*

	PAWL	COLOR	STEEL BOW	ALUMINUM BOW
TACTICAL	1	Yellow	56109	56110
SECURITY	2	Blue	46109	46110
EUROPEAN	3	Green	66109	66110



HANDCUFF ACCESSORIES



G1 LOGO KEY | 575__
SEE PAGE 76



FEDERAL CASE | 56138
SEE PAGE 67



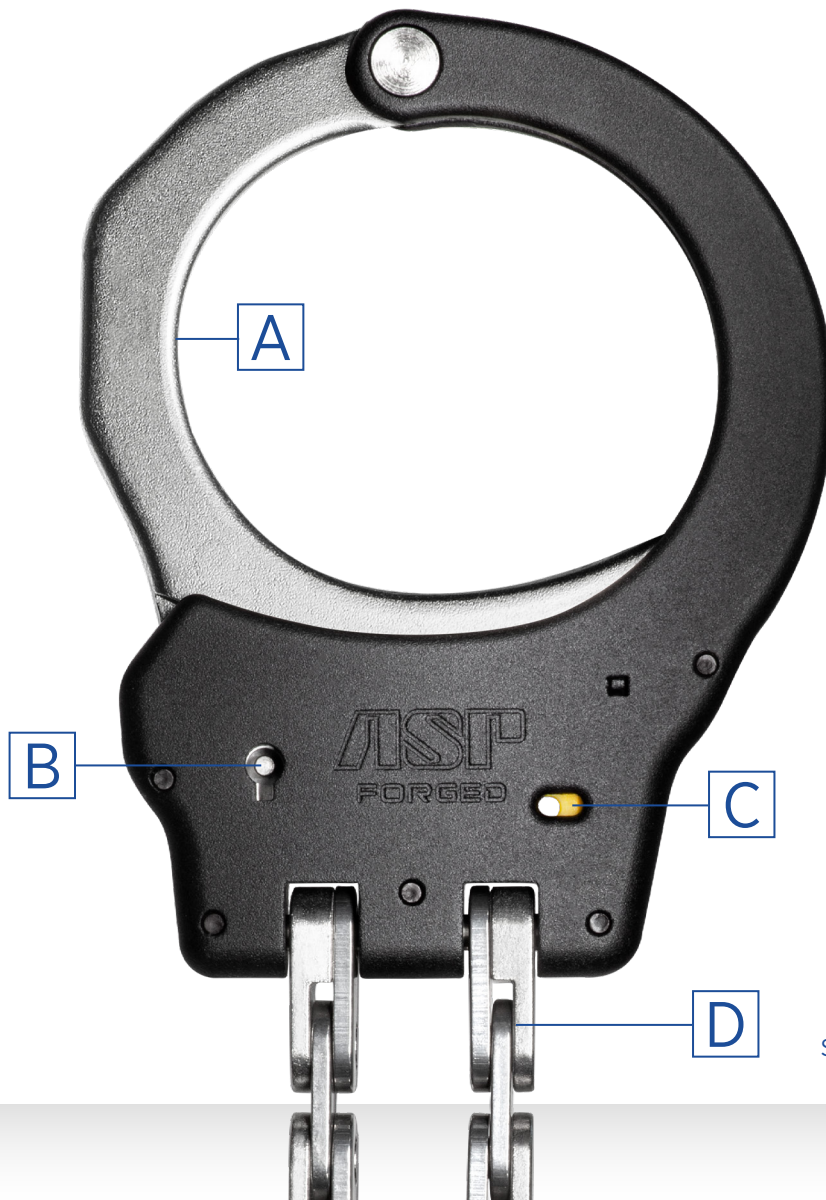
RESTRAINTS

HINGE

LINEAR MOBILITY, LATERAL RIGIDITY

Hinge Ultra Cuffs provide increased control of violent subjects. Because of their conical bow geometry, the cuffs fit large subjects yet still control small wrists. They are easily carried, rapidly applied and have a clean, smooth, finished appearance. The four point connection system allows the cuffs to fold flat and yet be worn over belts of various thicknesses. Because connecting rivets are integral with the side plate, they cannot be driven out.

- A Radiused Edges
- B Recessed Keyway
- C High Visibility Double Lock Indicator
- D Four Point Hinge



STEEL HINGE | 56119



HINGE SERIES

As with all ASP products, the design for the Hinge Handcuffs originated in the field. ASP Trainers surveyed Instructors and officers throughout the world. The most desirable handcuff features were listed and categorized. The result is a handcuff unlike any other. The design introduces features, construction and materials that are innovative, real world and strong.

An optimized frame design was achieved through the use of sophisticated computerized engineering programs. Strength potential was maximized through the selection of an optimal combination

of materials, heat treatment, frame geometry and reinforcing ribs. Added to these revolutionary design elements is a frame that is forged from 7075 T6 ordnance grade aluminum and permanently joined by 4140 heat treated spiral locking pins.

The swivel has traditionally been the weakest part of any handcuff design. Hinge cuffs use a pin and plate link to provide rigid frame alignment. The stainless steel links of ASP Hinge Handcuffs have a four point pivot structure to maximize handling characteristics.



STEEL | 56119



ALUMINUM | 56120

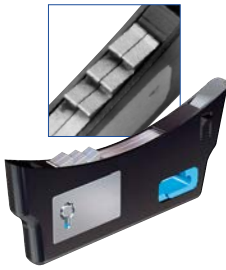
Aluminum handcuffs weigh 15% less than steel models and are distinguished by black bows.

REPLACEABLE LOCK SETS



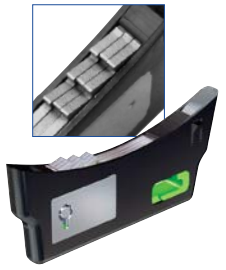
TACTICAL (1 Pawl)

The high visibility single pawl Lock Set is both strong and shim resistant.



SECURITY (2 Pawl)*

The two pawl divider plate design is virtually impossible to pick.



EUROPEAN (3 Pawl)

Three independent pawls provide an extra measure of security against shimming.

** Provided with proprietary handcuff key.*



The links of ASP Hinge Cuffs are constructed with a Metal Injection Molded (MIM) base and two fine blanked connectors. The lamination is exceptionally strong and rigid.

	PAWL	COLOR	STEEL BOW	ALUMINUM BOW
TACTICAL	1	Yellow	56119	56120
SECURITY	2	Blue	46119	46120
EUROPEAN	3	Green	66119	66120



HANDCUFF ACCESSORIES



AUTOKEY | 56256
SEE PAGE 77



DOUBLE CASE | 56160
SEE PAGE 66



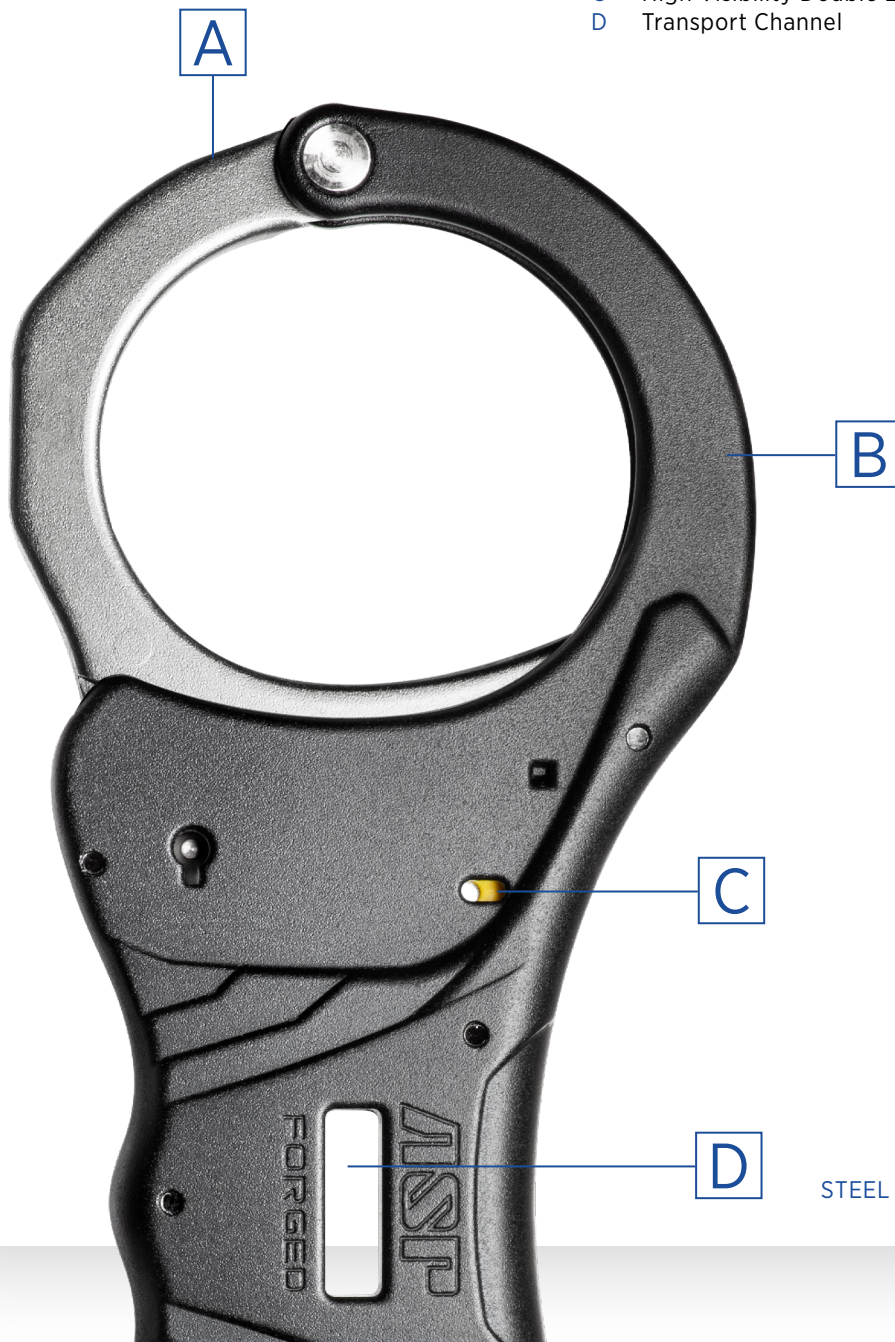
RESTRAINTS

RIGID

LINEAR AND LATERAL RIGIDITY

ASP Rigid Handcuffs may be used to control the most resistant subject. Their extended lock design provides a secure structure that allows an officer to stabilize without impact. The Rigid configuration offers the most restrictive handcuff structure in the ASP Restraint Series. It removes both lateral and linear mobility. For this reason, Rigid cuffs are ideal for courtroom or airline restraint.

- A Forged High Carbon Steel
- B Forged 7075 Aluminum
- C High Visibility Double Lock Indicator
- D Transport Channel



STEEL RIGID | 56020



RIGID SERIES

ASP Rigid Handcuffs feature a Transport Channel in the center of an ergonomic grip. The contoured hand guard maintains a clear path to the bow guides. As with all ASP Handcuffs, the Rigid design incorporates a forged 7075 aluminum frame. Cuffs have dual keyways and a high visibility double lock indicator.

The high contact conical bows have radiused edges. This design increases the range of adjustments for both large and small wrists. The lock action is extremely smooth, yet positive. Both double and single locks are released by turning the key in a single direction toward the bow. Thin. Lightweight. ASP Rigid Handcuffs. Providing officers with a new hold on control.

STEEL | 56020



ALUMINUM | 56030



Aluminum handcuffs weigh 15% less than steel models and are distinguished by black bows.

REPLACEABLE LOCK SETS



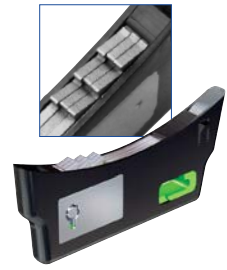
TACTICAL (1 Pawl)

The high visibility single pawl Lock Set is both strong and shim resistant.



SECURITY (2 Pawl)*

The two pawl divider plate design is virtually impossible to pick.



EUROPEAN (3 Pawl)

Three independent pawls provide an extra measure of security against shimming.

** Provided with proprietary handcuff key.*

	PAWL	COLOR	STEEL BOW	ALUMINUM BOW
TACTICAL	1	Yellow	56020	56030
SECURITY	2	Blue	46020	46030
EUROPEAN	3	Green	66020	66030



HANDCUFF ACCESSORIES



S2 SWIVEL KEY | 56253
SEE PAGE 77



RIGID CASE | 56172
SEE PAGE 69



RESTRAINTS IDENTIFIER

RAPID RECOGNITION

The patented designs of ASP Chain, Hinge and Rigid Handcuffs provide the safest restraints in the industry. The flat contact surface and smooth action prevents injury during application. All edges of the frame, cheek plate and bow are rounded to minimize the potential for nerve damage.

The conical geometry of ASP Handcuffs securely holds both small and large wrists. Forged Frame Technology results in smooth, rounded edges that reduce injury potential. The double lock indicator is highly visible. It is easily checked to assure activation. Cuffs that test too tight may be loosened and double locked without removing the key from the cuff.

The interchangeable Lock Set of ASP cuffs may be upgraded to a two pawl High Security or three pawl European. The two-sided lock release is recessed and easily accessed without trauma to the subject. Both the single and double lock are released by turning the key in one direction.



IDENTIFIER CHAIN | 56003



IDENTIFIER SERIES

Identifier Handcuffs are available in Chain, Hinge and Rigid configurations. They add permanent color options to this world class design. Identifier colors will not crack, chip or fade. They are a replaceable component of the handcuff frame.

The Identifier Series includes blue, gray, high visibility yellow and pink. Custom colors are available with a minimum purchase of 250 handcuffs.

Identifier Handcuffs can readily distinguish the restraints of specific agencies or divisions. They may be used to designate the security threat or medical condition of a subject. They add the final level of safety to the most secure series of handcuffs on the market.

CHAIN | 56001



HINGE | 56014



NEW RIGID | 56023



BLUE



GRAY



PINK



YELLOW



	STEEL CHAIN	STEEL HINGE	STEEL RIGID
BLUE	56001	56011	56021
GRAY	56002	56012	56022
PINK	56003	56013	56023
YELLOW	56004	56014	56024



Custom colors are available in lots of 250.



HANDCUFF ACCESSORIES



S1 SWIVEL KEY | 56252
SEE PAGE 77



TACTICAL CASE | 56136
SEE PAGE 68



RESTRAINTS

NEW

ANKLE

AUGMENTED SECURITY

ASP Ankle restraints incorporate the innovative design and construction features that revolutionized the restraint industry. A forged aluminum body, flat contact bows, replaceable Lock Sets, double sided keyway and spiral pin construction set ASP Ankle Cuffs apart from all other available leg restraints.

- A Hand Welded Stainless Steel Chain
- B 7075 Forged Aluminum Frame
- C Forged Steel Bow
- D Double Sided Keyway and Locking Slot



ANKLE CUFFS	PAWL	COLOR	STEEL BOW
TACTICAL	1	Yellow	56040
SECURITY	2	Blue	46040

RESTRAINTS CASES

CLASSIC CARRIERS WITH A HIDDEN ADVANTAGE

ASP Handcuff Cases are a benchmade blend of the finest materials in a series of clean, functional designs. Each case incorporates an integral back pocket and auxiliary handcuff key. Duty, Double, Centurion and Federal carriers are available in Black, Basketweave, Ballistic and ASPtec.

Federal cases are produced using inset construction. Centurion cases are corner stitched. Tactical carriers are constructed from ballistic nylon and incorporate a hook and loop flap.

Exo cases are compact, secure and rapidly released. Investigator Cases are concealable and attach rapidly to the belt. Combo carriers retain a Tactical Baton with restraints.

- A Secure Cuff Retention
- B Durable Case Finish
- C Spare Pentagon Key
- D Concealed Key Pocket



B

Handcuff cases attach with a Snap-Loc belt clip.

C

D



DOUBLE | 56160





CASES

All ASP handcuff carriers provide secure retention of an emergency key for the officer. The key pocket is out of sight on the back of the case.

The distinctive forged ASP Pentagon Handcuff Key is concealed from the public, yet easily accessible to the officer. It is not tied to the operator or the equipment.



DUTY

This rugged handcuff case incorporates a key pocket and is constructed with elastic side walls.



DUTY | 56131



DOUBLE

A line of uniform cuff cases that secure restraints with a protective hook and loop cover and elastic side wall technology.



DOUBLE | 56160



CENTURION

These handcuff cases incorporate a key pocket and are constructed with an inset back, protective cover and snap closure.



CENTURION | 56146



DUTY	CHAIN/HINGE
BLACK	56131
BASKETWEAVE	56132
BALLISTIC	56133
ASPTEC	56137

DOUBLE	
BLACK	56160
BASKETWEAVE	56161
BALLISTIC	56162
ASPTEC	56163

FEDERAL

A series of cuff carriers with an inset back and pull through retention strap.



FEDERAL | 56138



CENTURION	
BLACK	56146
BASKETWEAVE	56147
BALLISTIC	56148
ASPTEC	56149

FEDERAL	
BLACK	56138
BASKETWEAVE	56139
BALLISTIC	56140
ASPTEC	56141



TACTICAL

These high security handcuff cases retain ASP cuffs with an adjustable hook and loop flap.



TACTICAL | 56136



INVESTIGATOR

These plainclothes cuff cases are compact and concealable. They are designed for non-duty belts.



INVESTIGATOR | 56134



INVESTIGATOR

BLACK | 56134

BALLISTIC | 56135

NEW COMBO

ASP Combination Cases hold an Infinity Baton and restraints. They are compact clip-on carriers that are convenient, low profile and secure.

Baton & Cuff Cases hold an Agent or Talon Baton with a Chain or Hinge Cuff.



AGENT & CUFF CASE | 35653

TALON & CUFF CASE | 35654



NEW EXO

An open architecture security case that is equally suited to plainclothes or duty use. Restraints are locked in the carrier with a rapid release.



RIGID | 56172



EXO | 56130



RESTRAINTS

NEW TRANSPORT

PORTABLE SECURITY

Transport Kits are lightweight and compact. They provide enhanced security during the movement of subjects by law enforcement, court or corrections personnel and airlines.

- A Rapid Access Carrier
- B Transport Lock
- C Locking Tongue
- D Waist Restraint



TRANSPORT KIT (CHAIN) | 56176





NEW TRANSPORT KIT

The foundation of all Transport Kits is the ASP Rigid Handcuff. Rapid access carriers will accommodate a Rigid cuff as well as all kit components. Once Rigid cuffs have been applied, the waist chain encircles the subject. It is secured to the Rigid cuffs through the transport channel. The restraint is locked in place with the Transport Lock.



TRANSPORT KIT	CHAIN	BELT
TACTICAL (1 PAWL)	56176	56178
SECURITY (2 PAWL)	46176	46178

NEW TRANSPORT PLUS

The Transport Plus combines Rigid and Ankle Cuffs to create an enhanced retention system. A chain or belt interface is available for one pawl (standard) or two pawl (high security) restraints.



TRANSPORT PLUS	CHAIN	BELT
TACTICAL (1 PAWL)	56179	56186
SECURITY (2 PAWL)	46179	46186



ANKLE CHAIN	
120" (2 LOCKS, 4 KEYS)	56182
ANKLE BELT	
120" (2 LOCKS, 4 KEYS)	56129



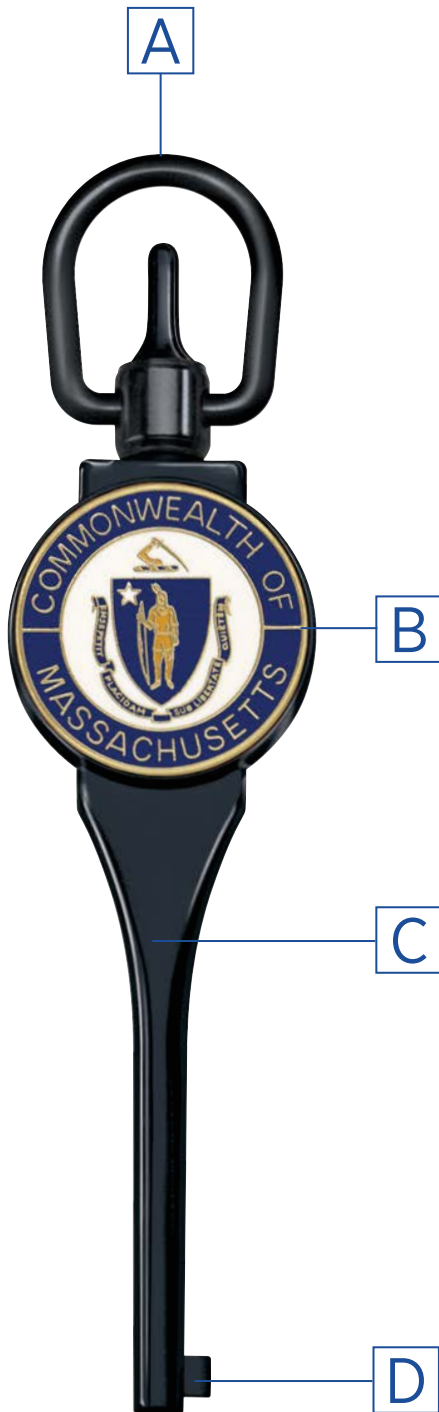
RESTRAINTS KEYS

AS TOUGH AS THE JOB

ASP Handcuff Keys are designed to withstand the rigors of long term duty use. Conventional keys are stamped from mild steel. They often break or twist off in a handcuff. These “key jammed” restraints create civil liability.

Each ASP key is hammer forged, then precision machined. Keys are heat treated for strength and coated with a protective finish. The unique ASP BackSet feature allows rapid location of the handcuff keyway.

- A Protective Keyring Swivel
- B Recessed Logo
- C Heat Treated Stainless Steel
- D BackSet Lock Release



GUARDIAN G1 | 56361



PENTAGON (12) | 56523



UNIVERSAL KEY SERIES

ASP Handcuff Keys are precisely machined for a universal fit, then heat treated for strength. The BackSet tab facilitates rapid location of the keyway.

Common handcuff keys twist off easily. They break when subjected to lateral pressure by a resisting subject. ASP heat treated handcuff keys are corrosion resistant and extremely durable.

Guardian G1 and G2 Logo Keys incorporate State Seals and law enforcement insignias. LockWrite Pen Keys combine two essential law enforcement tools, a handcuff key and pen. Both click and twist designs are offered. AutoKeys protect clothing while allowing rapid presentation of an extended key. Swivel and Clip Keys provide an extended reach. ASP knives combine essential accessories into a single pocket tool.

CUSTOM LOGOS

The ASP Custom Logo program allows die struck medallions to be fabricated for a specific agency or unit. Insignias can be inset into Guardian 1 or Guardian 2 Handcuff Keys, Baton Logo Caps (Page 28) or Logo Belts (Page 158).



GUARDIAN G1 | 56772



GUARDIAN G2 | 56689

PRESTIGE LOGOS

Fold out the back cover. Combine the first three numbers of the selected Guardian Key with the two numbers of the desired Prestige Logo.



BLACK

STAINLESS

GOLD

COPPER

BRASS

G1	563__	565__	567__	569__	575__
G2	564__	566__	568__	570__	576__



LOCKWRITE CLICK | 56254



LOCKWRITE TWIST | 56241

LOCKWRITE	GOLD	SILVER	BLACK	BLUE (2 PAWL)
CLICK	56254	56255	56247	56248
TWIST	56240	56241	56242	-

PEN CARTRIDGES	BLACK	BLUE	RED
	56244	56245	56246



Blue (2 Pawl)



AUTOKEY | 56256



S2 SWIVEL | 56253

S1 SWIVEL | 56252



CLIP | 56250
NEW CLIP (2 PAWL) | 46250



POCKET TOOLS	EDGE	INVESTIGATOR
BLACK ALUMINUM	56258	56207
BLUE CARBON FIBER	56259	56208
RED CARBON FIBER	56268	56209

RESTRAINTS

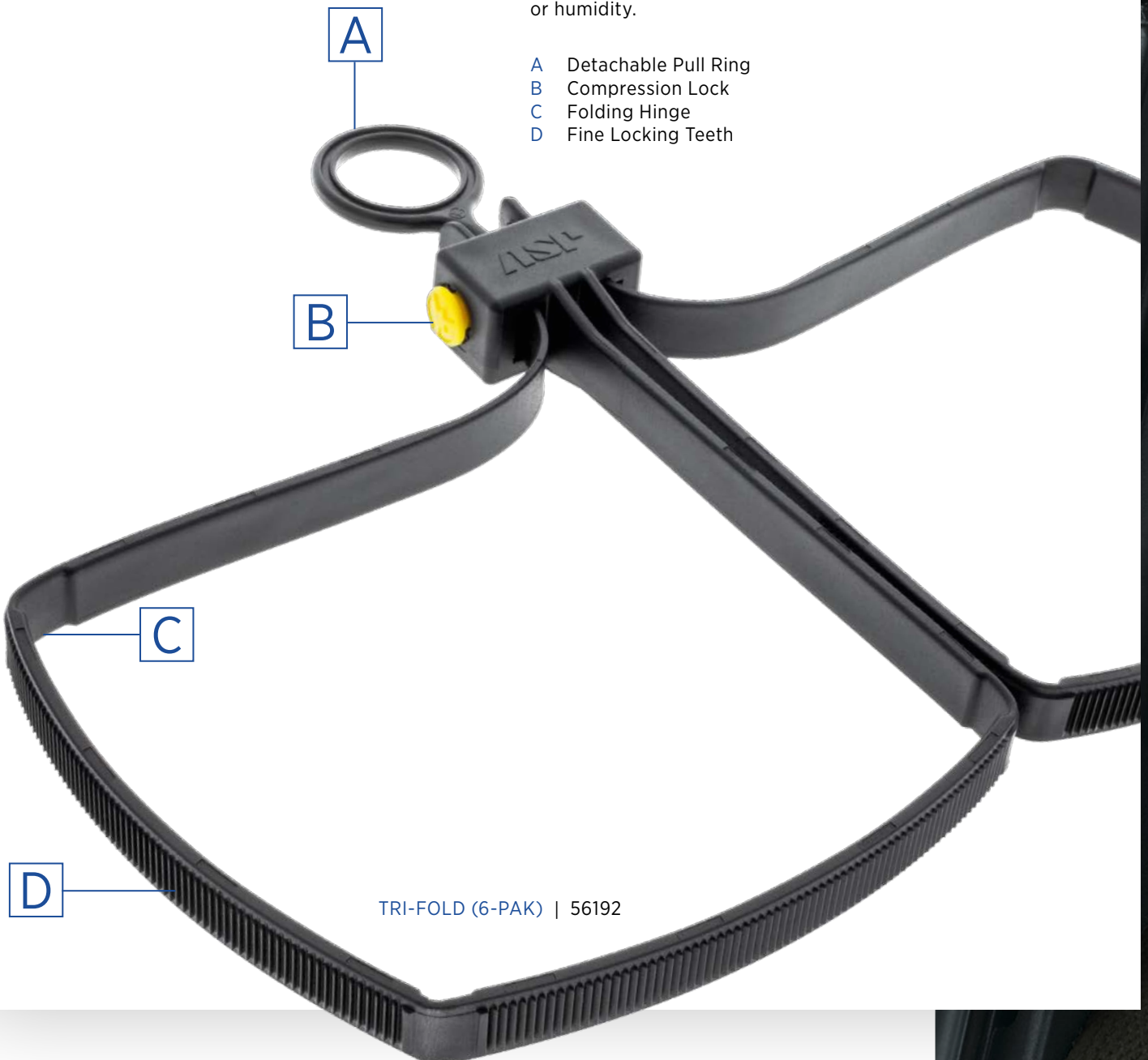
NEW TRI-FOLD

SINGLE USE SECURITY

Tri-Fold Disposable Restraints are the most compact, easily carried and rapidly applied single use restraint on the market. Specifically designed to law enforcement standards, their wide precision molded straps have no sharp edges.

Tri-Folds are the first choice of US military and police Rapid Response Teams. They are compact, yet open larger than other disposable restraints on the market. Their smooth pull simultaneously tightens both straps. The Tri-Fold is stronger, more pick resistant and easier to remove than any other disposable restraint. The design is not sensitive to heat, cold or humidity.

- A Detachable Pull Ring
- B Compression Lock
- C Folding Hinge
- D Fine Locking Teeth



TRI-FOLD (6-PAK) | 56192





TRI-FOLD SYSTEM

Tri-Fold Disposable Restraints incorporate a revolutionary one piece twin strap design. A patent pending lock assembly completely surrounds the ratchet mechanism of each restraint. The reinforcement provides protection against shimming. The design also makes it physically impossible to “pull through” the locking ratchet as is possible on other double restraints.

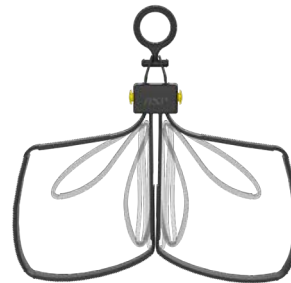
Each Tri-Fold strap folds in three locations for compact storage. The straps are .5" wide with rounded edges and smooth contact surfaces to protect the subject's wrists. Two compression locks and undercut teeth assure strap retention.

The double box configuration of expanded Tri-Fold straps provides large pre-formed restraints. Once expanded, the straps can be rapidly applied. The design allows both restraints to be pulled simultaneously with the included pull ring.

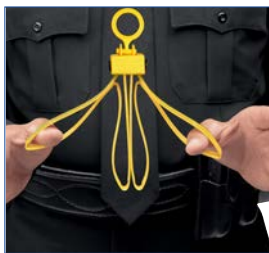
Tri-Fold straps may be opened for use and returned to a folded position for storage. However, once they have been pulled past the recessed identification plate and the teeth engage the locking ratchet, it is not possible to retract the straps for storage.



YELLOW (6-PAK) | 56190



BLACK (6-PAK) | 56192



POP



PLACE



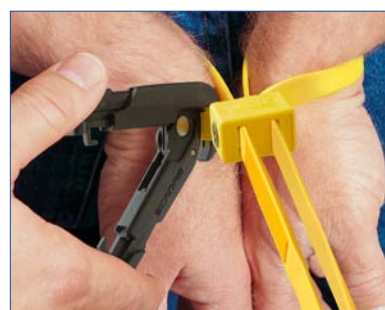
PULL



PRESS



SCARAB CUTTER | 56225



Scarab Cutters attach to a keyring. They remove restraints with compound leverage.

NEW COMBO

The BRL carrier positions an Agent Baton, Tri-Fold Restraint and Tungsten light on a plainclothes belt.



BRL CASE | 35655



PULL (6) | 56213



NEW TRI-FOLD CASE | 56201

NEW TRI-FOLD & SCARAB CASE | 56226
(INCLUDES SCARAB)



CARABINERS	BLACK	GRAY	COYOTE	YELLOW
LARGE	56216	56222	56217	56218
MINI	56260	56262	56261	56263



Carabiners secure Tri-Folds and Scarabs to a tactical vest, belt or pants.

LIGHTING

SIMPLY BRILLIANT





SELECTING YOUR ASP LIGHT

ASP was an early pioneer in handheld LED lighting and maintains deep ties in the lighting industry. A founding member of the ANSI FL1 Flashlight Standards Committee, ASP sits on the Executive Board of PLATO, the trade association for portable lighting.

ASP lights are blindingly bright. They combine innovative design with world class craftsmanship. The result is unparalleled performance and uncompromising reliability in law enforcement lighting.

LENS

Optically ground German glass transmits light to produce a precise beam pattern.

REFLECTOR

Gasket sealed machined aluminum parabolic reflectors are vacuum plated for increased reflectivity.

BATTERIES

Lithium primary cells include a positive temperature coefficient (PTC) protective circuit. Rechargeable batteries incorporate PCM circuit protection.

GRIP

Seamless foamed vinyl grips are both durable and heat resistant.

SWITCH

Three position rotary controls provide intermittent, locking and constant function activation.

FINISH

Military grade Type III hardcoat anodizing is both protective and durable.

POCKET CLIP

Polymer clips allow lights to be carried lens up or lens down.

ACTIVATION BUTTON

The rear mounted button on ASP lights has an elastomeric cover.







"ASP lighting products are unique. They are designed, engineered and manufactured to an uncompromising standard of excellence."

- 95  SAPPHIRE
- 98  DOT
- 101  RAVEN
- 102  PHAROS
- 105  SCRIBE
- 106  GARDA
- 108  SENTINEL
- 110  TUNGSTEN
- 112  PRO
- 114  POLY
- 116  TRIAD
- 119  SPECTRUM
- 121  GRIFFIN
- 123  RAPTOR
- 125  TACTICAL
- 126  TLC
- 129  POWER
- 131  ACCESSORIES



COMPARISON CHART

	EVERY DAY CARRY							TRANSITIONAL			
	Sapphire	Dot	Raven	Pharos	Scribe	Garda AA DF	Garda CR DF	Sentinel e3	Tungsten DF	Pro AA	Pro DF
Lumens	20	130	160	220	300	350	315	375	430	305	430
Run Time (Hours)	1	.5	2	.75	1	1	.75	1.5	3.5	2	4
Beam Distance (Meters)	26	43	33	58	81	71	79	108	126	160	143
Micro USB	●	●				●	●	●	●		●
Dual Fuel			●	●	●	●	●		●		●
e3 Fuel								●			
CR123A Batteries							●	●	●		●
AA Batteries						●		●		●	
AAA Batteries			●	●	●						
Water Resistant			●	●	●	●	●	●	●	●	●
Reversible Pocket Clip					●			●	●	●	●
3-Position Switch								●	●	●	●
Double Tap			●		●	●	●	●	●	●	●
Battery Level Indicator								●	●	●	●
TLC Case						●	●	●	●	●	●
Foamed Vinyl Grip											
Black Type III Hardcoat		●	●	●	●	●	●	●	●	●	●
Programmable Output										●	●
Traffic Wand										●	●
Length	2.88"	1.872"	5.75"	5.75"	5.5"	4.3"	3.9"	3.9"	5.75"	5.5"	6.25"
Page	95	98	101	102	105	106	106	108	110	112	112

											
Poly AA	Poly CR	Poly DF	Triad AA	Triad DF	Spectrum DF	Griffin DF	Raptor DF	Tactical	Tactical T	Fusion T	
DUTY					STRATEGIC						
275	600	420	325	500	250	1125	1700	180	180	180	Lumens
1.75	1.75	4	3.5	3.5	1	1.5	1	.5	.5	.5	Run Time (Hours)
90	204	200	195	200	88	232	240	47	47	47	Beam Distance (Meters)
		●		●	●	●	●	●	●	●	Micro USB
		●		●	●	●	●				Dual Fuel
											e3 Fuel
	●	●		●	●	●	●				CR123A Batteries
●			●								AA Batteries
											AAA Batteries
●	●	●	●	●	●	●	●				Water Resistant
●	●	●	●	●	●	●	●				Reversible Pocket Clip
●	●	●	●	●	●	●	●				3-Position Switch
●	●	●	●	●	●	●	●				Double Tap
●	●	●	●	●	●	●	●				Battery Level Indicator
●	●	●	●	●	●	●	●				TLC Case
●	●	●	●	●	●	●	●				Foamed Vinyl Grip
			●	●	●	●	●	●	●	●	Black Type III Hardcoat
				●	●	●	●				Programmable Output
●	●	●	●	●	●	●					Traffic Wand
7.125"	6.125"	6.75"	7.25"	6.25"	6.25"	6.25"	6.5"	2.125"	2.56"	2.63"	Length
114	114	114	116	116	119	121	123	125	125	125	Page



LIGHTING SAPPHIRE

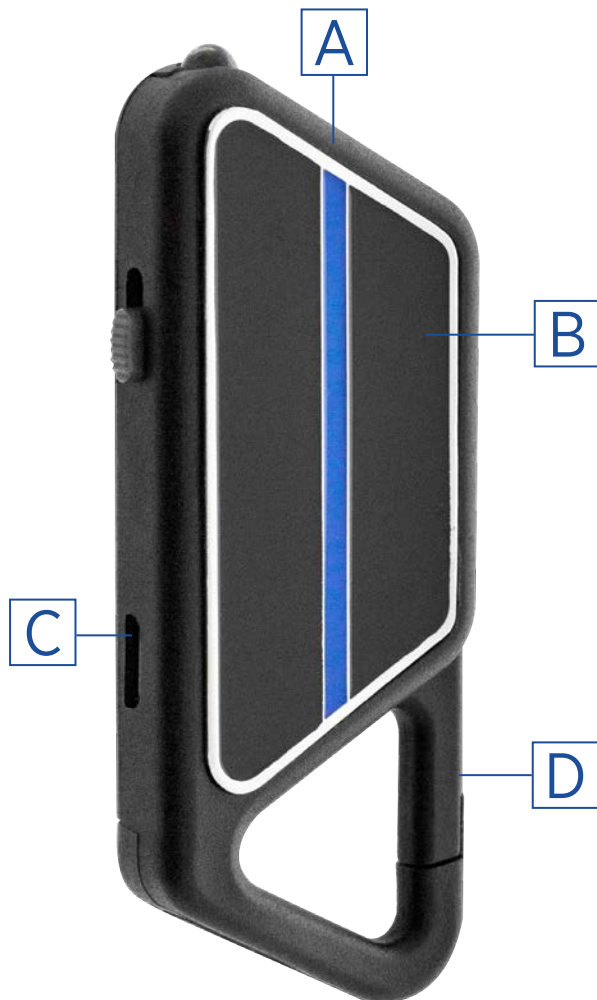
EVERY DAY CARRY SERIES

Sapphire lights introduced the concept and set the standard for personal LED lighting. With millions sold, the simple design, premium materials and brilliant output established a set of criteria which were often imitated, but never equaled.

The Sapphire incorporates an integral Tri-Ring retention clip. The Sapphire is incredibly lightweight. The polymer frame of the light holds mirror polished aluminum panels.

The Sapphire is available with multiple colors and designs. Custom panels with distinctive insignias or logos are available.

- A Polymer Frame
- B Inset Metal Panel
- C USB Port
- D Tri-Ring Retention Clip



BLUE LINE SAPPHIRE | 53565



SAPPHIRE

ASP Wearable Lights introduce a new technology to personal lighting products. Sapphire lights are bright, reliable and conveniently clipped. The Sapphire provides 20 lumens of bright white light. It produces a high efficiency, non-deteriorating solid state beam. The light will become your constant companion. A Lifetime of Light . . . where and when you need it.



AMERICAN FLAG | 53564



ONE* | 53562



The unique features of the Sapphire are made possible by its advanced electronics.

PANEL OPTIONS



BLACK | 53554



BLUE | 53550



GOLD | 53555



GREEN | 53556



PEWTER | 53552



PINK | 53559



RED | 53553



VIOLET | 53551



ONE* | 53562



AMERICAN FLAG | 53564



EAGLE | 53561



RIBBON | 53560



BLUE LINE | 53565

LIGHTING

DOT

EVERY DAY CARRY SERIES

The Dot was designed as the world's smallest full function micro USB rechargeable flashlight. Ergonomics of the Dot follow the Every Day Carry (EDC) design of ASP high intensity LED illumination tools. Lightweight and compact, the light can be carried in the pocket or on a keychain.

The surface of the Dot is black hardcoat anodized. Each is accented by a gold band and split ring. The design is attractive, yet rugged. Twin body cuts combine with a serrated bezel to provide smooth rotary two level activation.

The Dot may be connected with the included Micro Flex cable to any computer, car or wall charger. It may also be recharged with a micro USB phone cord. During charging, the indicator blinks red. It turns to constant green when the Dot is fully charged.

- A Two Level Twist Activation
- B 10440 Lithium-ion Battery
- C Micro USB Charge Port
- D Custom TIR Optic



DOT (BLUE) | 35719



DOT (BLACK) | 35718



DOT (RED) | 35720





LIGHTING RAVEN

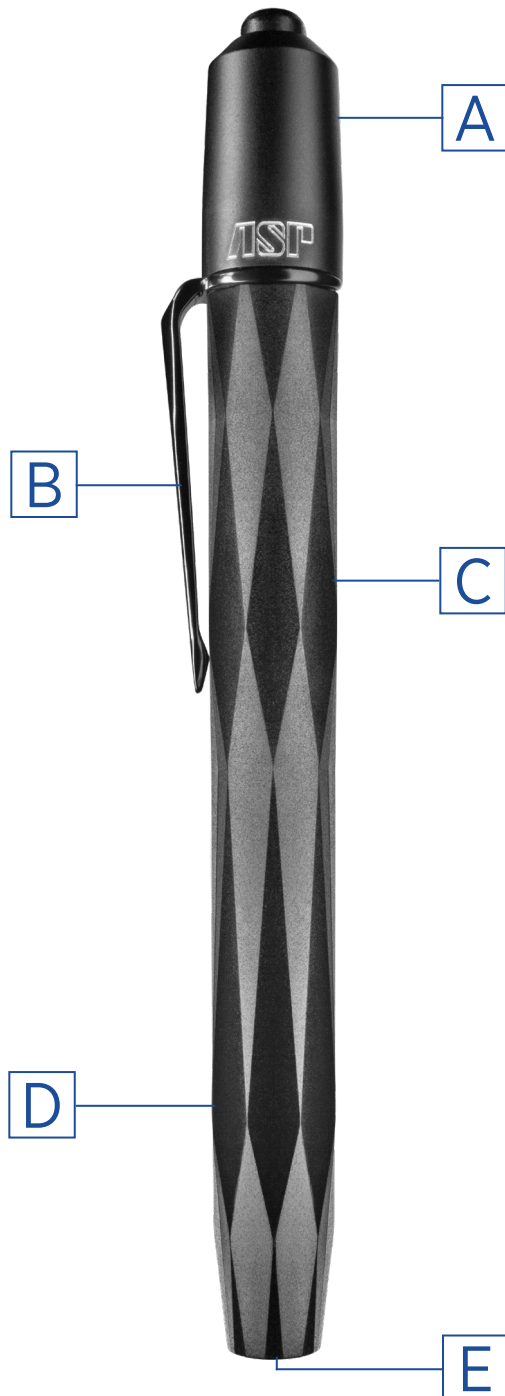
EVERY DAY CARRY SERIES

The Raven has the dimensions and feel of a fine writing instrument. It is easily carried in a suit, shirt or pants pocket. The rear button activation is instantly accessible.

The Raven is a two level light. There are no complex settings, elaborate activation codes or secret functions. A simple push of the rear mounted activation button provides brilliant intermittent or constant illumination. A double tap gives instant access to a low output second level.

The uniqueness of the Raven is the amount of technology that has been compressed into the form factor. Each Raven is built to professional law enforcement standards. Black hardcoat anodized controls are accented with a forged steel pocket clip. A precision TIR lens is optically clear. The 45 facet Raven body fits securely in the hand, yet it is fabric friendly.

The Raven ships with a micro USB rechargeable 10900 Lithium-ion battery. The light will also run on two AAA primary cells.



RAVEN | 35740

- A Type III Hardcoat Anodizing
- B Forged Steel Pocket Clip
- C 45 Facet Polymer Body
- D Two Level Double Tap Activation
- E Custom TIR Optic

LIGHTING

PHAROS

EVERY DAY CARRY SERIES

This Every Day Carry (EDC) flashlight is small, bright and stylish. Built to complement the finest writing instruments, the Pharos is equally at home in the pocket of an executive, business professional or investigator. Each Pharos is purpose built to an unmatched level of performance.

The Pharos body is machined to exacting tolerances, hand etched, then precision anodized to architectural standards. The forged pocket clip is coil spring biased to prevent fatigue. A simple click activates the light. Two rapid clicks provide reduced output.

The Pharos is packaged with a micro USB rechargeable 10900 Lithium-ion battery. The light also accepts AAA primary cells.

Convenient to carry, the Pharos is a light that is both attractive and reliable.

- A Coil Spring Pocket Clip
- B 18K Gold Accents
- C Hand Etched Body
- D Micro Polished Reflector



PHAROS (GRAY) | 35724



PHAROS (BLACK) | 35723



PHAROS (BLUE) | 35725





LIGHTING SCRIBE

EVERY DAY CARRY SERIES

The Scribe pen style light is part of the ASP series of Every Day Carry (EDC) illumination tools. It is small, bright and tough. It provides a shirt pocket backup to ASP Duty lights.

The Scribe is shipped with a micro USB rechargeable 10900 Lithium-ion battery. The light can also be powered by two AAA Lithium batteries. The light is an ideal companion for the serious professional who requires maximum output with minimal size.

The Scribe light is easily carried in a suit pocket or shirt. The rear button activation is instantly accessible.

Easily carried. Conveniently clipped. Incredible intensity at the touch of a button.



- A Activation Button
- B Forged Clip
- C Hardcoat Anodized Finish
- D Micro Polished Reflector

SCRIBE | 35700

LIGHTING

NEW

GARDA

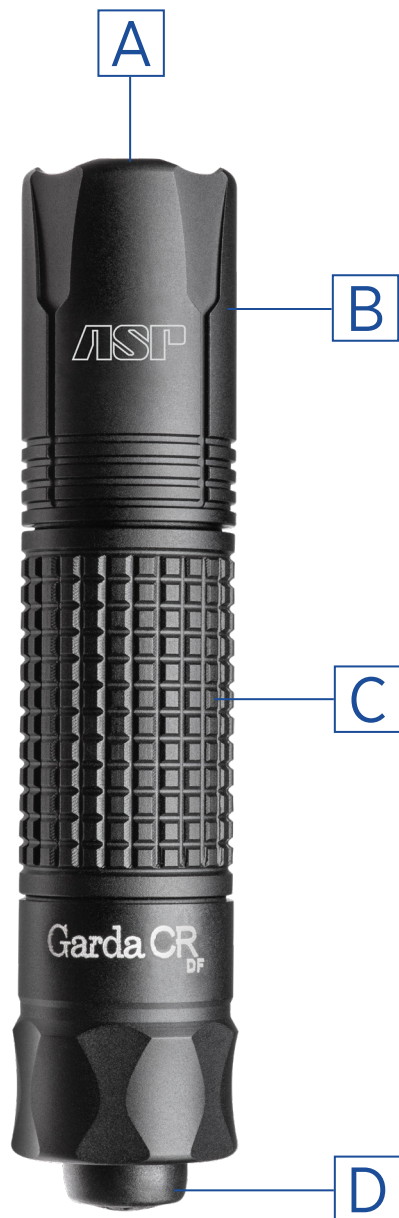
EVERY DAY CARRY SERIES

Garda lights were designed as the ultimate backup. They are small, smooth and powerful. The lights are available in AA and CR rechargeable.

Each Garda light has set a new standard of illumination. They are bright and functional, yet compact. They have no sharp edges. The lights provide brilliant one hand illumination with a rear mounted micro switch.

Garda lights are shipped with an ASP micro USB rechargeable 14500 or 16340 battery. They will also run on AA or CR123A primary cells.

- A Optical Glass Lens
- B Hardcoat Anodized
- C Machined Grip
- D Two Level Button Activation



GARDA CR | 35737



GARDA AA | 35736



LIGHT KEEPER (Garda CR)

BLACK	52775
BASKETWEAVE	52776
BALLISTIC	52777
ASPTEC	52778



LIGHTING

NEW

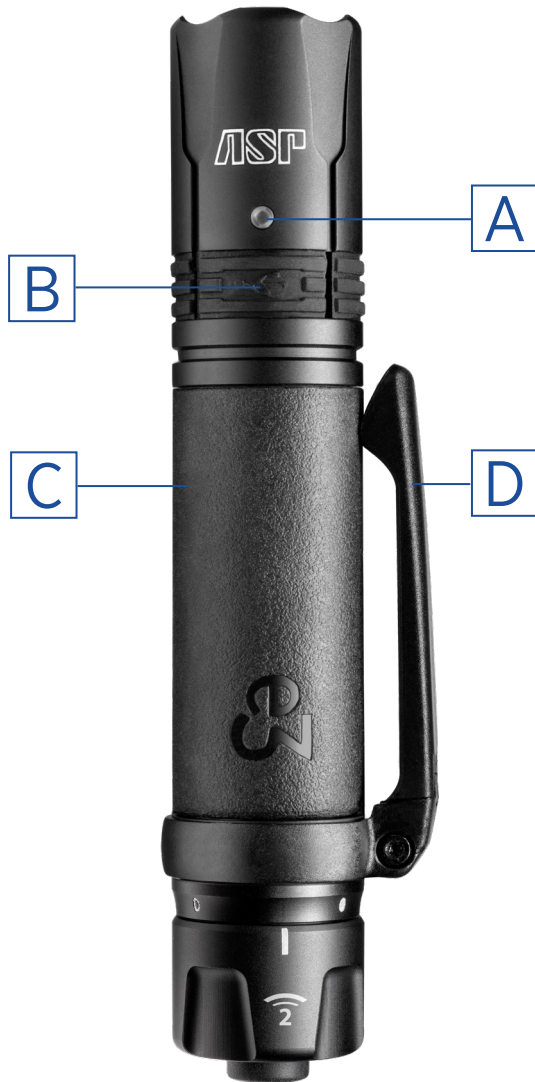
SENTINEL

TRANSITIONAL SERIES

The Sentinel e3 is the industry's first three fuel rechargeable light. It will run on the included 16340 Lithium-ion rechargeable battery, a CR123A Lithium primary cell or a AA battery.

The Sentinel light is the ultimate Transitional illumination tool. It is small and powerful. The light is USB rechargeable. It has a rear mounted activation switch which allows it to be used as a backup duty light. The use of 16340 rechargeable, CR123A Lithium or AA primary cells allows the light to function worldwide. It provides brilliant illumination that is always at hand.

- A Charge Indicator Light
- B Charge Port Cover
- C Molded Grip
- D Reversible Polymer Pocket Clip



SENTINEL e3 | 35745



LIGHTING

TUNGSTEN

TRANSITIONAL SERIES

The reduced form factor of the Tungsten DF is made possible by a revolutionary new light engine. ASP research developed a unique technology which produces brilliant white pre-focused light. A constant current driver is combined with a mathematically precise collimating cone to achieve unparalleled output. Advanced optics are coupled with precision machined high strength aerospace aluminum. All surfaces are then anodized with a proprietary Type III matte black hardcoat finish.

A four cut switch rotates to an Intermittent · Locked · Constant position. The detachable pocket clip may be positioned for lens up or lens down carry. All connectors and springs on the Tungsten are gold plated.

Powered by a Lithium-ion 18650 rechargeable battery, the Tungsten employs Dual Fuel Technology. It may also be powered by two CR123A batteries.

- A Optical Glass Lens
- B Hardcoat Anodized
- C Pocket Clip
- D Three Position Switch



TUNGSTEN DF (US) | 35710
(EU) | 35717



LIGHTING PRO



PRO DF (US) | 35730
(EU) | 35731

TRANSITIONAL SERIES

Police personnel do not have the luxury of adjusting dials or sequencing through settings each time they need a light. Lighting is a tactical tool. When required, it must be readily accessible, rapidly activated and instantly adjusted.

At the same time, individual preferences differ regarding the amount of light output that is desirable. At the highest level there is agreement. The brighter the better. A brilliant beam illuminates the environment and disorients an assailant. Small lights with stunning output are a significant asset to the law enforcement professional.

Low level light output is a matter of individual preference. Some prefer 15 lumens, especially in a sustained low light environment. Others feel that a setting of 60 or 150 lumens is preferable for everyday tasks. A strobe is felt to be more desirable for operational requirements or traffic management. The Pro allows an officer to pre-set their preferred secondary light.

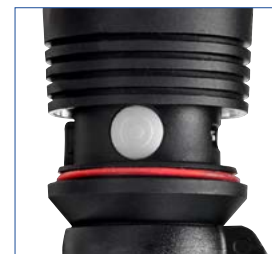
The body of the Pro has a unique spiral grip. A replaceable pocket clip can be positioned lens up or lens down. The tapered bezel and switch aid pocket insertion. They provide an ergonomic hold.

The Double Tap switch of the Pro can access either the high or pre-set secondary output of the light.

- A Tapered Bezel
- B Reversible Polymer Pocket Clip
- C Spiral Grip
- D Three Position Switch



PRO AA | 35708



Programmable Mode Switch



LIGHTING

POLY



POLY DF | 35644

DUTY SERIES

The Poly AA, CR and DF are part of the Duty Series of ASP illumination tools. They have an aluminum frame and foam grip. A clip groove is molded into the lens and switch end of each light. A replaceable pocket clip locks into either groove. Polys are ideal in cold weather. Their polymer surface is more comfortable in the hand under adverse climate conditions.

Poly lights are available in AA, CR123A and Dual Fuel rechargeable configurations. AA lights use a battery that is readily available worldwide. CR lights have a greater output. DF lights are micro USB rechargeable.

The internal frame and parabolic reflector of each Poly is aluminum. This alloy core improves conductivity and manages heat.

Poly lights are compatible with the entire ASP line of performance products. Auxiliary TLC belt cases, Lithium power cells, Link battery cases and zippered storage carriers are available. The lights are strong, lightweight and brilliant. Polymer illumination tools, built to the quality standard of ASP.

- A Optical Glass Lens
- B Polymer Body
- C Foamed Vinyl Grip
- D Three Position Switch



POLY AA | 35615



POLY CR | 35626



LIGHTING

TRIAD



TRIAD DF (US) | 35625
(EU) | 35621

DUTY SERIES

The Triad DF is a blindingly bright tactical tool. However, in certain operational settings, a lower light output or strobe is desirable. The Triad is designed for these specific activities. The Triad is essentially ten lights in one. It provides five outputs from two power sources.

The Triad is a micro USB rechargeable Dual Fuel light that may be run on either an 18650 or two CR123A power cells. The rear mounted Intermittent · Locked · Constant light switch is independent of the output selector.

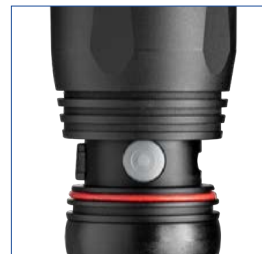
Rotating the bezel of the Triad reveals a micro USB charge port and charge indicator. The battery indicator blinks red when charging. It turns solid green when fully charged. The light comes with a wall charger, car charger and retractable charge cord. They are encased in a zippered ballistic carrier. The car charger and wall charger have a blue LED indicator to confirm the power source is active.

The body of the Triad has a unique foam grip. The pocket clip can be positioned lens up or lens down.

- A Hardcoat Anodized Finish
- B Reversible Polymer Pocket Clip
- C Foamed Vinyl Grip
- D Three Position Activation Switch



TRIAD AA | 35622



Programmable Mode Switch





LIGHTING NEW SPECTRUM

STRATEGIC SERIES

The multi-color outputs of the Spectrum are designed for circumstances that require specific ranges of color. The light can output a high lumen white light. Its Double Tap function can be set to output a 15 lumen white as well as red, blue, green or strobe light.

- Red – Preserves night vision. Provides emergency signaling.
- Blue – Reads maps at night. Highlights blood and bodily fluids. Cuts through fog.
- Green – Longer run time.
- Strobe – Signals. Used as a force multiplier.

The Spectrum is a micro USB rechargeable Dual Fuel light that may run on either an 18650 or two CR123A power cells. The rear mounted Intermittent · Locked · Constant light switch is independent of the output selector.

Rotating the bezel of the Spectrum reveals a micro USB charge port and charge indicator. The battery indicator blinks red when charging. It turns solid green when fully charged.

The body of the Spectrum has a unique foamed grip. The pocket clip can be positioned lens up or lens down.

Pressing the switch of the Spectrum once activates a brilliant white output. Rapidly pressing twice (Double Tap) activates the pre-set second level.

- A Tapered Bezel
- B Reversible Polymer Pocket Clip
- C Foamed Vinyl Grip
- D Three Position Activation Switch



SPECTRUM (US) | 35664
(EU) | 35669



NEW LIGHTING GRIFFIN

STRATEGIC SERIES

Strategic lights are designed for specific applications. In the case of the Griffin DF, the goal was to produce a Duty size light with an output of over 1,000 lumens and a run time in excess of 1.5 hours. The stainless steel bezel ring of the Griffin denotes achievement of that goal. The diminutive light produces a 1,125 lumen initial beam. A second level output can be set at 15, 60, 150, 500 lumens or strobe.

The Griffin will run for over 1.5 hours on its micro USB rechargeable 18650 power cell or optional CR123A batteries. The 18650 can be charged independently or in the light. A battery indicator measures remaining capacity.

The Griffin may be cased in the TLC. It provides strategic level illumination for duty applications.

- A Stainless Bezel Protector
- B Foamed Vinyl Grip
- C Two Level Output
- D Extended Activation Button



GRIFFIN (US) | 35678
(EU) | 35679



LIGHTING

NEW

RAPTOR



RAPTOR (US) | 35674
(EU) | 35676

STRATEGIC SERIES

Intensity and run time are competing factors in the design of a handheld lighting device. Extreme intensity requires energy. The greater the intensity, the more significant the energy drain. The Raptor DF resolves this issue. It provides an intermittent or constant output of 1,700 lumens with a one hour run time as measured against the ANSI FL1 Standard.

The Raptor is machined from 6061 T6 aluminum. It is Type III hardcoat anodized with a matte black finish. The foamed vinyl grip provides thermal insulation and a firm hold.

Dual Fuel technology of the Raptor allows use of an 18650 rechargeable or two CR123A primary cells. The 18650 may be charged independently or in the light. A battery indicator measures remaining capacity.

The first level output of the Raptor is a brilliant 1,700 lumens. The second level is programmable to 15, 60, 150, 500 lumens or strobe.

A simple design. Simple operation. Sophisticated results.

- A Stainless Bezel Protector
- B Heat Dispersion Ribs
- C Reversible Belt Clip
- D Three Position Switch



LIGHTING TACTICAL

STRATEGIC SERIES

The Tactical (F Series), Tactical T and integral clip Fusion T are designed for use with ASP Expandable Batons. They are compact, rugged and incredibly bright. Precision machined from high strength aerospace aluminum, the lights are anodized with a proprietary satin black Type III hardcoat finish.

The leak proof Lithium power cell has a ten year shelf life. The Total Internal Reflector (TIR) lens is gasket sealed. It produces a brilliant white penetrating beam of incredible brightness.

These lights are easily recharged with the supplied retractable cord. Any micro USB cell phone charger will connect to the light. Auxiliary car and wall chargers are available from ASP.

The intermittent or constant switch activation system of these lights is positive, yet secure. Press down for intermittent light. Press down and forward for constant illumination. These brilliant high intensity auxiliary lights can be attached to any of the 3 million ASP Batons in operation worldwide. They are the perfect backup. Lights that are tough, bright and always at hand.

- A TIR Lens
- B Intermittent · Constant Switch
- C Micro USB Charge Port
- D Baton Attachment



TACTICAL T* | 35637



TACTICAL | 35636



FUSION T* | 35638

** Compatible with button release batons only*

LIGHTING TLC

COMBINED BRILLIANCE

Protection, portation and presentation are the criteria by which tactical cases are judged. The ASP Tactical Light Case (TLC) excels in each of these three categories. It is the most advanced light carrier for the professional who must employ a high performance light under stress.

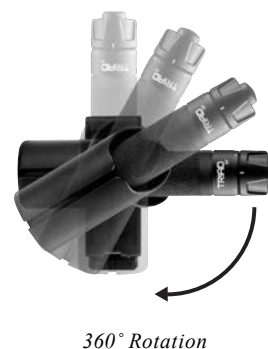
The TLC is available for all categories of ASP illumination tools. The TLC rotates 360° to 12 distinct positions. Cases carry lights lens down. The position protects the light and speeds presentation.

A tactical light is worn in the TLC on the Reaction Side. It is drawn in a smooth, natural grip with the thumb on the rear switch. Rapidly presented, the light may be instantly activated.

The Tactical Light Case secures lights with two opposing internal retention orbs. The TLC will snap on any military, duty or dress belt. It is MOLLE compatible. The attachment clip is robust and secure. The TLC provides hands free position and is easily repositioned or removed.

The ASP Tactical Light Case. Protection, portation, presentation. Another street quality design from the company that set the standard.

- A Twelve Position Rotation
- B Angled Insertion Port
- C Retention Orbs
- D Snap-Loc Belt Loop



TLC (TACTICAL LIGHT CASE)

GARDA	35648
TUNGSTEN, SENTINEL	35643
PRO	35647
TRIAD, POLY, SPECTRUM, GRIFFIN	35640
NEW RAPTOR	35661

TRIAD TLC | 35640





LIGHTING POWER

UNIVERSAL SUPPORT

ASP lights are part of a total system. They are complemented by cases, belt carriers and a tactical training program. Charging accessories and exclusive ASP power cells are an integral part of the lighting system.

Lithium primary cells are the international standard for powering tactical lighting products. With an extremely dense energy source, Lithium batteries have a ten year shelf life. They function in a wide range of temperatures and environments. Lithium power cells are leakproof and vibration resistant. They provide the most dependable source of power currently available for handheld professional lights.

ASP Lithium cells incorporate a positive temperature coefficient (PTC) protection circuit and safety vent. The system prevents instability in the event a cell overheats or should rapidly discharge as the result of a short.

Interconnecting battery cases are available for CR123A primary cells and 10900, 14500, 14990, 16340 and 18650 Lithium-ion rechargeable batteries. Link cases allow an officer to carry a variety of battery types or interconnect any quantity of a specific battery.



- A Charge Indicator
- B Micro USB Charge Port
- C Lithium Technology
- D Maximized for Flashlights



PRIMARY CELL BATTERIES		CR123A
4 PAK & LINK CASE		53032
12 PAK & LINK CASE		03028
50 PAK (BULK)		03029
LINK CASE (4)		53026
LITHIUM-ION RECHARGEABLE BATTERIES		
NEW	10900 & LINK CASE	53053
NEW	14500 & LINK CASE	53036
NEW	14990 & LINK CASE	53054
NEW	16340 & LINK CASE	53037
NEW	18650 & LINK CASE	53030

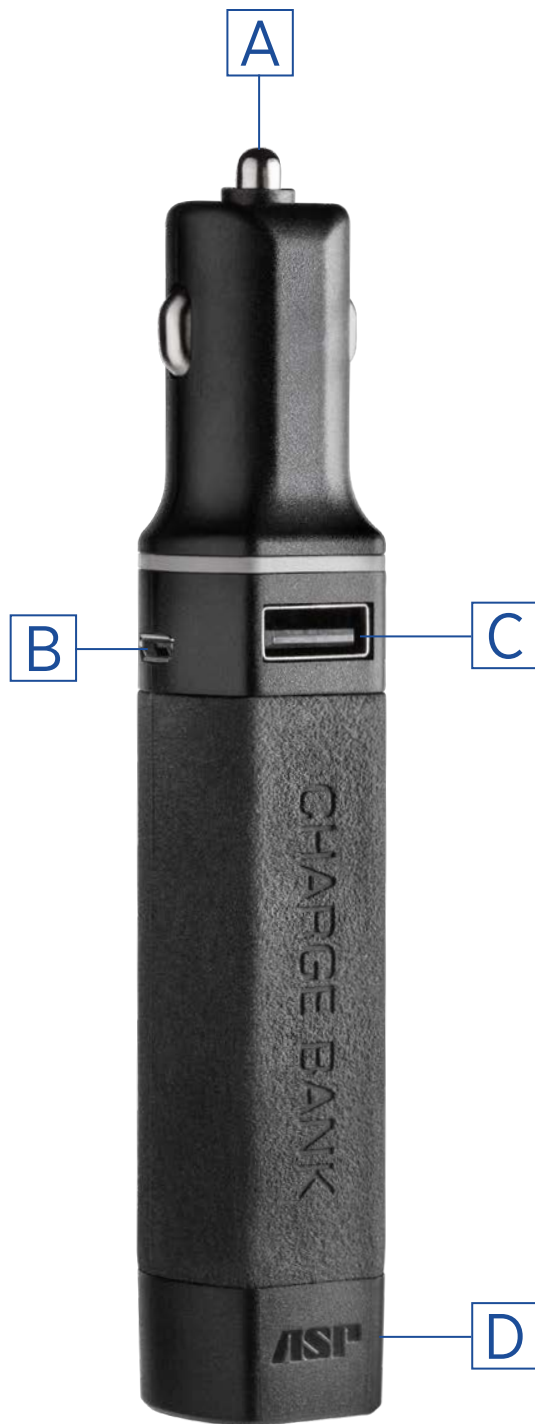


LIGHTING ACCESSORIES

UNIVERSAL SUPPORT

The ASP collection of flashlight accessories was designed specifically for performance lighting products. The proprietary designs are built to the demands of the law enforcement professional. They are compatible with the entire range of ASP illumination tools.

- A Car Plug
- B Micro USB Charge Port
- C USB Charge Plug
- D Battery Cap



CHARGE BANK | 53048





LIGHTING ACCESSORIES

Accessories for ASP Performance Lights are both convenient and functional.

The Traffic Wand attaches by means of a rotating lock. It is compatible with all Poly, Triad, Spectrum and Griffin lights. The Light Lanyard incorporates a breakaway feature. It may be used to secure a light on the wrist during a search or suspend a light from the neck for instant access.

A range of ASP charging connectors are available. The Keystone, Micro Flex, Retractable and Retractable Plus each feature the groundbreaking ASP reversible charge plugs. Car and Wall Chargers have power function indicators. The Charge Dock is compact, magnetic and attaches to any micro USB cord. The Charge Bank can recharge an 18650 power cell or provide power to other devices.



NEW CHARGE DOCK | 53051



LIGHT LANYARD | 53064



TRAFFIC WAND

RED | 35650

YELLOW | 35651





RETRACTABLE | 53042



RETRACTABLE PLUS

BLACK | 53049

YELLOW | 53050



MICRO FLEX | 53046



KEYSTONE | 53043



WALL CHARGER (US) | 53040



CAR CHARGER | 53041



WALL CHARGER (EU) | 53045



OC

AEROSOL PROTECTION



SELECTING YOUR OC DEFENDER

Traditional chemical irritants are little more than specially loaded spray cans. ASP Defenders were designed as a dispersion system for chemical irritants. Rather than filling a standard aerosol can with OC (Oleoresin Capsicum), Defenders incorporate a proprietary container, specially produced valve system and patented dispensing mechanism. They are precision machined from aerospace aluminum and solid brass. The entire unit is o-ring sealed.

SPLIT RINGS

Heat treated and black plated split rings provide secure retention of keys.

SAFETY

The thumb released wraparound design of the Defender safety requires two separate and distinct operations to release and activate the unit.

COATING

The use of bright dip architectural anodizing assures the durability of each Defender.

INSERT

Defenders use proprietary replaceable Inserts that were designed by ASP to provide straight line dispersion of Heat (OC) or Test (Inert).

DISPERSION TIP

Defender Inserts have an extremely precise aperture that controls the pattern of OC.

"ASP Defenders provide a safe, rugged and extremely effective OC delivery system."



139
PALM DEFENDERS



139
KEY DEFENDERS



OC DEFENDERS

KEYRING PROTECTION

The ASP Defender Series is precision machined from high strength aerospace aluminum. They are lightweight, low profile, easily carried and devastatingly effective. Bright dip industrial anodizing is accented by an injection molded Delrin safety. The solid brass keyring swivel retains two heat treated black split rings. Both the dispersion tip and retention cap are o-ring sealed.

The safety is positive and secure. Release requires two distinct movements. Straight line activation places a cone-shaped spray on target, even in the dark. Heat (OC) provides two million Scoville Heat Units of Oleoresin Capsicum protection. Test (Inert) Inserts allow safe training.

- A Solid Brass Actuator
- B Wraparound Safety
- C Fine Line Knurling
- D Anodized Aluminum Body



KEY DEFENDER (BLUE) | 55150





DEFENDER SERIES

Defenders eliminate the likelihood of accidental OC discharge. The horizontal firing system combined with a wraparound safety and thumb activated brass swivel preclude unintended activation.

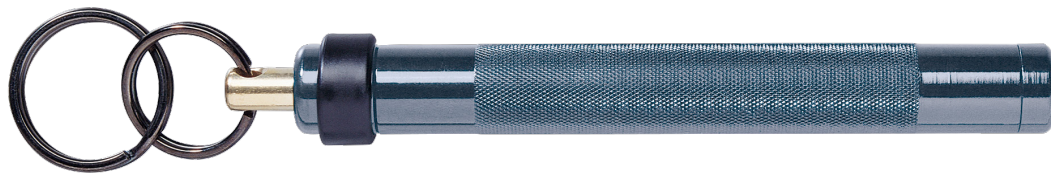
Discharging the system requires two separate and distinct operations to disengage the safety and activate the Insert.

Defenders are available in seven anodized colors and matte black texture.

Both Palm and Key Defenders have solid brass swivel activators, wraparound Delrin safeties and heat treated black chrome split rings. Heat (OC) and Test (Inert) Inserts are replaceable.



PALM DEFENDER (PINK) | 54959



KEY DEFENDER (PEWTER) | 55152



INSERTS	PALM	KEY
HEAT (OC)	54910	55110
TEST (INERT)	54911	55111
HEAT (TWIN PAK)	54912	55112
TEST (TWIN PAK)	54913	55113
HEAT & TEST (TWIN PAK)	54914	55114



DEFENDER	BLACK	BLUE	GOLD	PEWTER	PINK	RED	VIOLET	TEXTURED
PALM	54954	54950	54955	54952	54959	54953	54951	54957
KEY	55154	55150	55155	55152	55159	55153	55151	55157

KEY TAGS



EAGLE (RECTANGLE)

BRASS | 52789
SILVER | 52790

Registered key tags allow lost keys to be sent to ASP postage paid, then returned to the owner at no charge.



EAGLE (ROUND)

BRASS | 52786
SILVER | 52787



VIGILANCE

BRASS | 52780
SILVER | 52781



ROSE

BRASS | 52783
SILVER | 52784

TRAINING

FOR THE STREET





PROTECTING THOSE WHO PROTECT

It is a corporate goal. A statement of mission. An approach to doing business.

Armament Systems and Procedures (ASP) is a major manufacturer of Tactical Batons, Handcuffs and Flashlights. The company supplies impact weapons, restraints and lights to major police agencies in over 100 countries. The ASP Tactical Baton is the dominant intermediate force impact weapon in the law enforcement community.

ASP Training is the most widely utilized intermediate force program in the profession. All ASP Trainers are experienced law enforcement personnel, not civilian martial artists. Each Trainer is selected based upon their operational experience and training competence. Each has completed a rigorous competency based certification process in operational use of ASP Batons, Restraints and Flashlights.

ASP Training is a service that we provide, not a profit center from which we benefit. Conducted on six continents, the techniques are universal. The curriculum is constant. The instruction is dynamic.

Each officer completing ASP Training will endure the most rigorous curriculum of its type in the world. This is a program for the street officer. Easy to learn. Effective when used. Defensible in court. ASP techniques are designed to work for all officers, not just those with a high level of physical skill. These are honest techniques. Over four decades of experience has proven that they work on the street, not just in the ideal environment of a classroom or gymnasium.

Simple to learn and easy to remember. ASP techniques will be used long after training has ended.

"ASP Integrated Baton, Restraint and Flashlight Training has set the world standard for competency based tactical instruction."



147

TRAINING BAGS



148

TRAINING BATONS



151

TRAINING RESTRAINTS



155

RED GUNS



157

SUPPORT



158

BELT KEEPERS



159

POCKET TOOLS



162

PORTATION



164

BLUE LINE



166

INSIGNIA



TRAINING BAGS

REALITY BASED INSTRUCTION

The ability to employ force to control a confrontation is a critical law enforcement skill. It is the singular responsibility that separates the police from other occupations. ASP Training Bags allow officers to master impact, light and restraint techniques while preparing for the reality of the street. The design facilitates progressive instruction while maintaining a safe training environment.

- A Soft Seam Edges
- B Orientation Logo
- C Pressure Relief Vents
- D Retention Straps



TRAINING BAG | 07102



FIVE BAG CARRIER | 07103



TRAINING BATONS

TRAIN TO SURVIVE

ASP Training Batons allow officers to master use of ASP Expandable Batons. They are an integral part of progressive ASP Training. Their construction provides the ability to conduct high level simulation training in a safe environment.

- A Protective Tip Guard
- B Soft Seam Edges
- C Replaceable Foam Core
- D Foamed Vinyl Grip
- E Carrier



21 BATON & CARRIER | 07201



BATON CARRIER | 07203

26 BATON & CARRIER | 07200



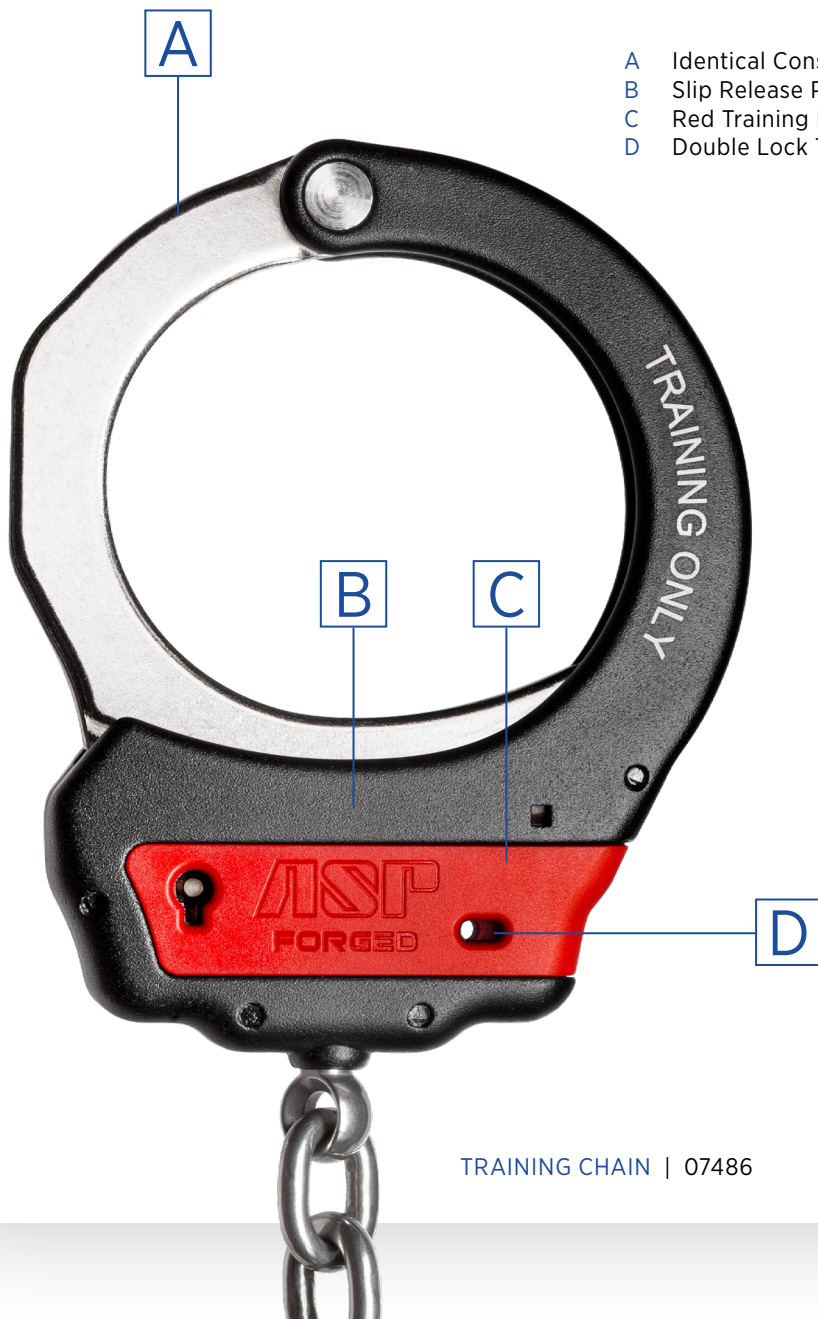


TRAINING RESTRAINTS

A NEW LOCK ON CONTROL

Handcuff Training requires repetition to master basic skills. The design of the ASP Training Ultra Cuffs permits field quality restraints to be applied exactly as on the street. However, the Lock Set of these handcuffs allows the student to rapidly remove the cuffs by simply rolling their wrists.

Training restraints dramatically increase the number of possible training sequences. When the cuffs are double locked, standard uncuffing techniques can be trained. To assure identification as Training Handcuffs, both the restraints and the Lock Sets are color coded red.



- A Identical Construction
- B Slip Release Pawls
- C Red Training Identification Band
- D Double Lock Training

TRAINING CHAIN | 07486



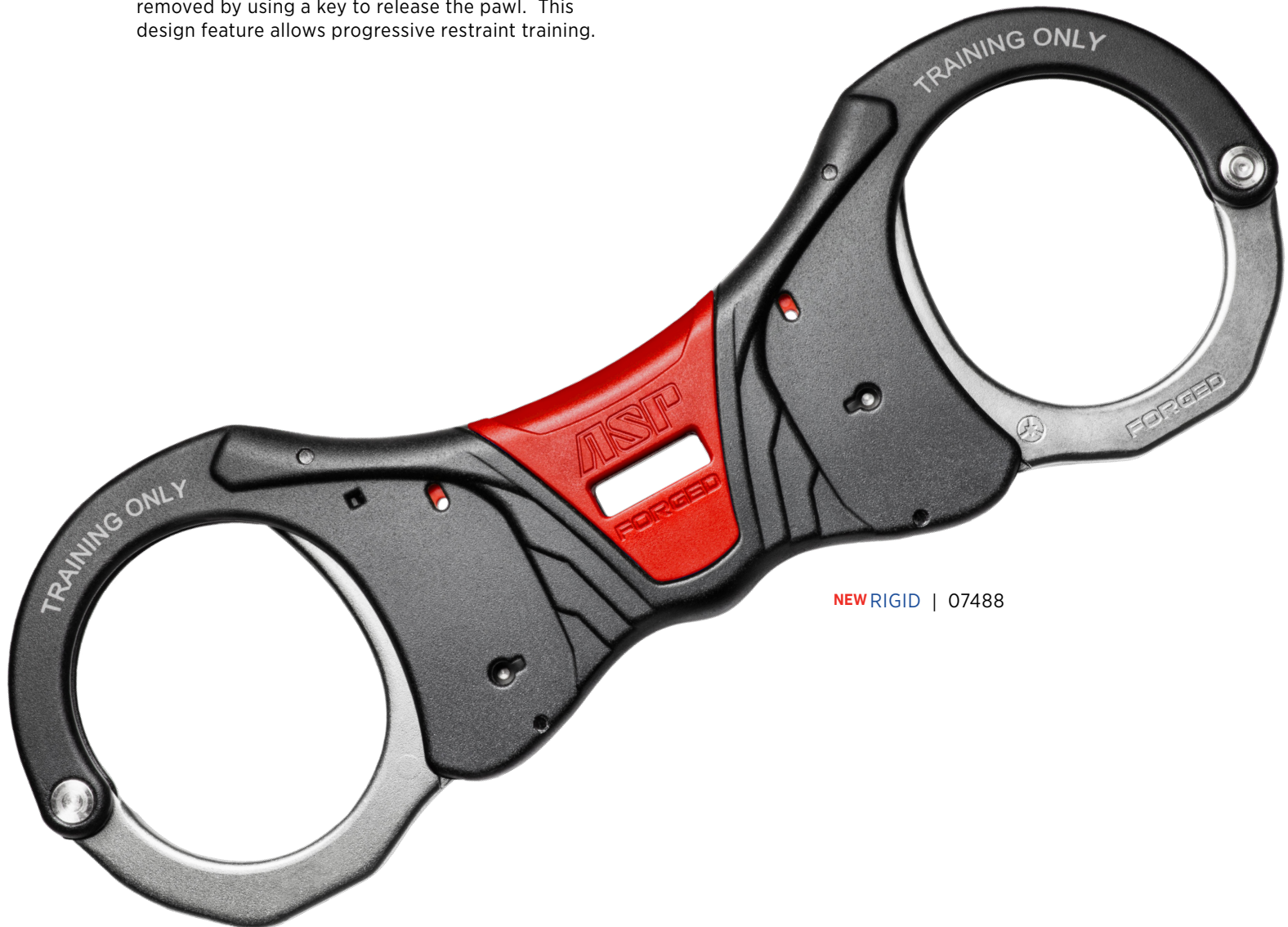
TRAINING RESTRAINTS

All ASP Training Products are identical to their operational counterparts. They can be cased, carried and presented in the same manner as their tactical twin.

Red Training Chain, Hinge and Rigid Restraints are applied using the same Rock & Lock handcuffing procedure. They may then be rapidly removed using the Rotary Release technique. Training Restraint pawls are designed to disengage when subjected to continuous back pressure. The handcuffed student need only roll the wrists to release the cuffs.

Training cuffs may also be double locked. Once the secondary lock is activated, hard cuffs can only be removed by using a key to release the pawl. This design feature allows progressive restraint training.

During ASP Handcuff Training, students initially apply restraints to Training Batons and remove the cuffs by sliding them off. Next, students apply restraints to other trainees, having the subject remove the cuffs by rotating their wrists. Finally, hard cuffs are applied and double locked. Double and single locks are released with a key that is turned in the direction of the bow. This progressive training system maximizes restraint application while allowing officers to practice all components of the handcuff skill set.



NEW RIGID | 07488



TRAINING (Slip Pawl)

Slip pawl restraints may be released by rotating the wrists.



CHAIN | 07486



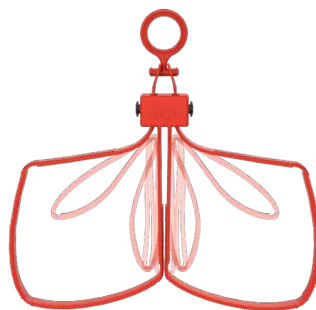
HINGE | 07487



RIGID | 07488



NEW TRAINING ANKLE CUFFS | 07460



NEW TRI-FOLD (6-PAK) | 56191





TRAINING NEW RED GUNS

SAFE, VISIBLE AND REALISTIC

The police firearm is an officer's most distinctive piece of service equipment. Each year a significant number of law enforcement personnel are shot with their own weapons. Weapon retention training as well as weapon disarming procedures are critical law enforcement skills. In addition, police personnel must learn to routinely carry firearms and master the safe handling of weapons under stress.

Officers must acquire weapon safety skills for use while moving, when searching and during room clearance procedures. Red Guns provide rugged, lightweight training replicas that are precisely detailed to create a safe training environment. They provide a safe means of training law enforcement personnel to handle, transport, retain and present firearms.

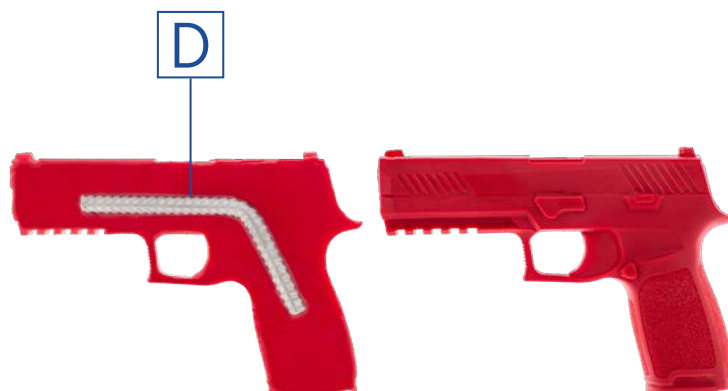
- A High Impact Polymer
- B Vivid Red Training Identification
- C Reinforced Trigger
- D Metal Interior Reinforcement



M4 | 07411



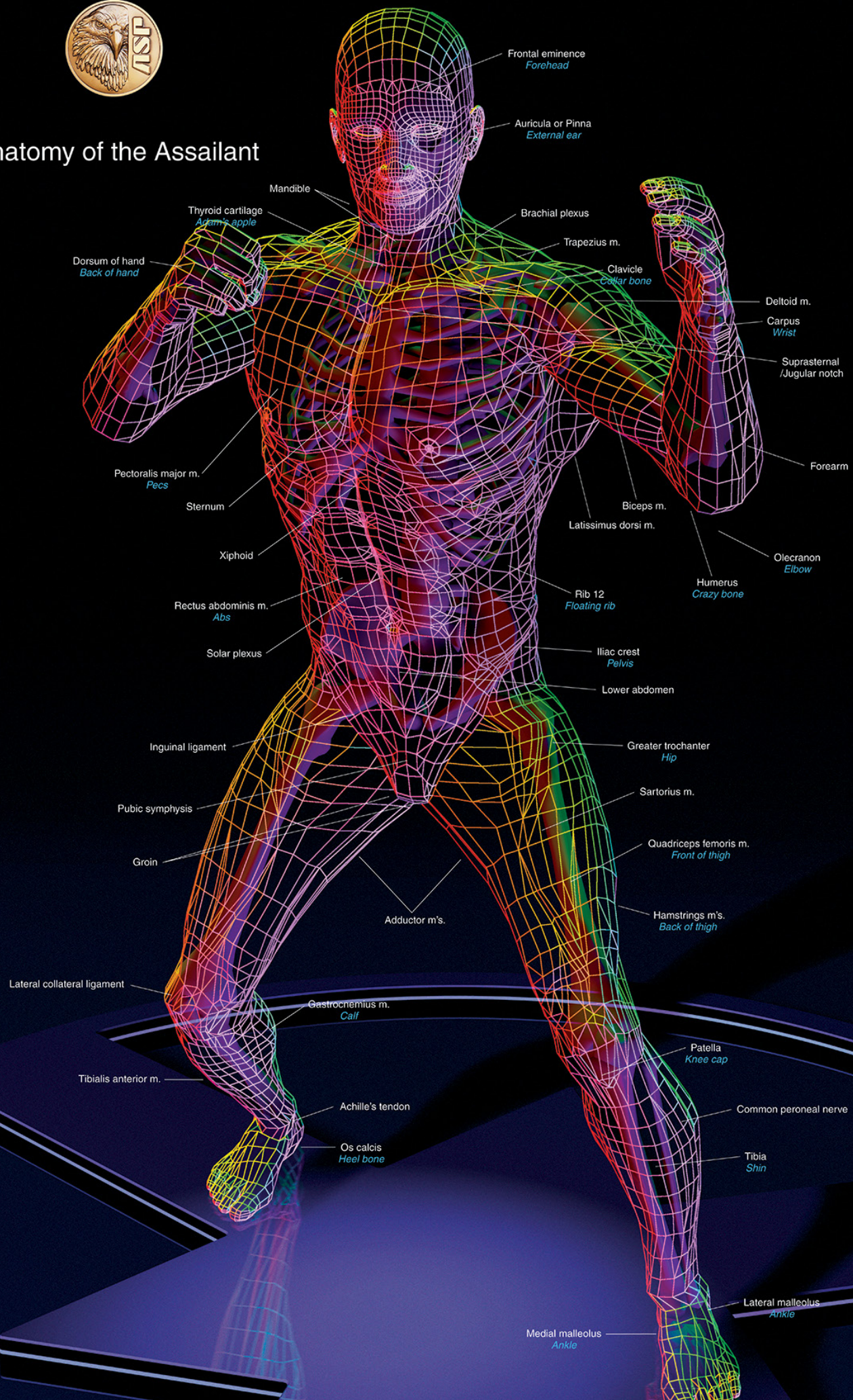
BERETTA 92 (DROP-MAG) | 07394



SIG P320 | 07364



Anatomy of the Assailant



Frontal eminence
Forehead

Auricle or Pinna
External ear

Mandible

Thyroid cartilage
Adam's apple

Brachial plexus

Trapezius m.

Clavicle
Collar bone

Deltoid m.

Carpus
Wrist

Suprasternal
Jugular notch

Forearm

Dorsum of hand
Back of hand

Pectoralis major m.
Pecs

Sternum

Biceps m.

Latissimus dorsi m.

Olecranon
Elbow

Humerus
Crazy bone

Xiphoid

Rectus abdominis m.
Abs

Rib 12
Floating rib

Solar plexus

Iliac crest
Pelvis

Lower abdomen

Inguinal ligament

Greater trochanter
Hip

Pubic symphysis

Sartorius m.

Groin

Quadriceps femoris m.
Front of thigh

Adductor m's.

Hamstrings m's.
Back of thigh

Lateral collateral ligament

Gastrocnemius m.
Calf

Patella
Knee cap

Tibialis anterior m.

Achille's tendon

Common peroneal nerve

Os calcis
Heel bone

Tibia
Shin

Medial malleolus
Ankle

Lateral malleolus
Ankle

TRAINING SUPPORT

A TOTAL SYSTEM

ASP Integrated Training teaches use of ASP Expandable Batons, Flashlights and Restraints. It is a competency based program that is based upon needs of the real police. It is an integrated system of field tested techniques for the reality of the street. ASP Integrated Training is effective, realistic and court defensible. It supports the five categories of ASP products.





TRAINING SUPPORT

The ASP Eagle insignia is recognized worldwide as a symbol of uncompromising quality and field proven performance. It represents a universal commitment to excellence. ASP signature products identify those who share this philosophy.



ASP HAT | 09800



TRAINING HAT | 09813



ASP EAGLE LOGO BELT



ASP EAGLE EQUIPMENT BELT

	SMALL (28-30)	MEDIUM (32-34)	LARGE (36-38)	XLARGE (40-42)	XXLARGE (44-46)
LOGO BELT					
1.5"	10001	10101	10201	10301	10401
1.75"	10501	10601	10701	10801	10901
EQUIPMENT BELT					
2"	09831	09832	09833	09834	09840

BELT KEEPERS

ASP Keepers are designed for retention. Each Keeper in the series is constructed from premium top grain American leather. They provide long years of service. The Keepers assure a precise fit and secure retention of duty accessories. These custom designs are both unique and functional.



SINGLE



DOUBLE

BELT KEEPERS	SINGLE (4)	DOUBLE (2)
BLACK	52760	52761
BASKETWEAVE	52768	52772
BALLISTIC	52769	52773
ASPTEC	52770	52774

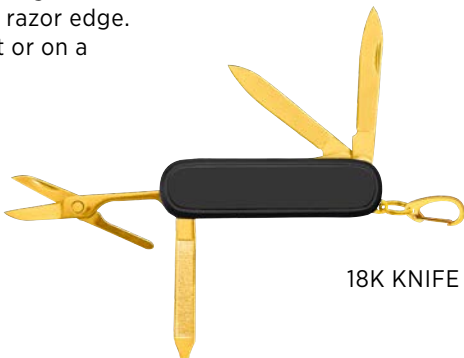
POCKET TOOLS

ASP Pocket Knives are designed for Every Day Carry (EDC). Each is a precisely engineered utility tool that is designed to be readily at hand.

ASP blades are produced from the finest stainless steel. They are forged to shape, then hand ground, mirror polished and precisely honed to a razor edge. Each knife fits conveniently in the pocket or on a keyring.



ADVOCATE KNIFE



18K KNIFE



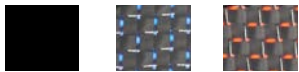
SELECT KNIFE



ACCENT KNIFE



REGENT KNIFE



POCKET TOOLS	BLACK	BLUE	RED
18K KNIFE	55706	55707	55708
ACCENT KNIFE	56236	56237	56238
ADVOCATE KNIFE	55716	55717	55718
REGENT KNIFE	55701	55702	55703
SELECT KNIFE	56231	56232	56233

ASP EAGLE SHIRT	COLOR	SILVER GRAY
SMALL	09801	09701
MEDIUM	09802	09702
LARGE	09803	09703
XLARGE	09804	09704
XXLARGE	09805	09705



ASP EAGLE SHIRT (COLOR)



SILVER GRAY

TRAINING SUPPORT



GLIDE | 35121



ALERT WHISTLE

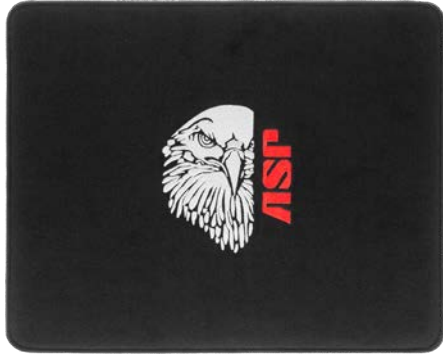
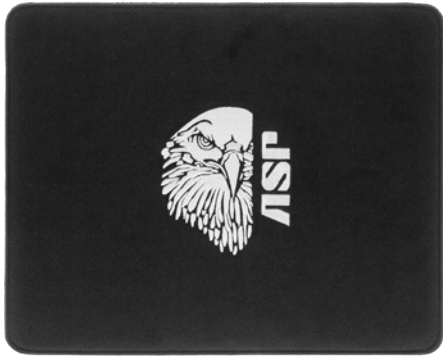
WHISTLE	56291
WHISTLE & TOOTHGUARD	56292
WHISTLE (RED LANYARD)	56290
WHISTLE (BLACK LANYARD)	56293



NEW REPAIR KIT | 35112



NEW SAFETY KIT | 37900



NEW ASP EAGLE LOGO MAT

SILVER | 35320

RED & SILVER | 35321

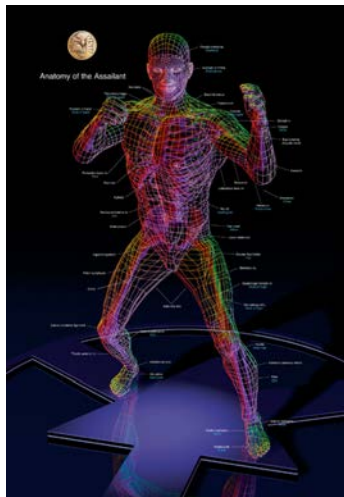


NEW INSTRUCTION MAT

TALON BATON 35322

CHAIN ULTRA CUFF 35323

TRIAD DF LIGHT 35324



POSTERS	UNFRAMED	FRAMED
ANATOMY	01226	01227
COMPONENTS	01203	01204
VIGILANCE	01214	01215



PORTATION

In the demanding world of professional law enforcement, ASP and its iconic Eagle insignia are internationally recognized and universally respected. ASP products are known for their singular design, quality construction and superior performance.

Centurion Bags are rugged, purpose built carriers. They evolved from this unique heritage. Each case is constructed of water resistant ballistic weave polypropylene and fine warp tricot protective lining. They have bound edges, nylon coil zippers and custom pulls. Each is designed to carry, identify and protect essential content. These are cases that are built to function flawlessly when failure to protect is not an option.



NEW LUGGAGE TAG | 59513



TSA COMBINATION LOCK | 59510



GEAR BAG | 09915



SHOULDER STRAP | 59512



SMALL ROLL BAG | 59505



LARGE ROLL BAG | 59506



RTD ROLLING TRAINING DUFFEL | 59515



NEW DAY BAG | 59500



ACCESSORY



VIEW



ENVELOPE



PAK

DUTY



ADDENDUM

ACCESSORY	BLACK	SILVER	TAN	RED	YELLOW
SMALL	22515	22516	22517	22518	22519
MEDIUM	22522	22523	22524	22525	22526
LARGE	22529	22530	22531	22532	22533
XLARGE	22536	22537	22538	22539	22540

VIEW

SMALL	22543	22544	22545	22546	22547
MEDIUM	22550	22551	22552	22553	22554
LARGE	22557	22558	22559	22560	22561
XLARGE	22564	22565	22566	22567	22568

ENVELOPE

SMALL	22571	22572	22573	22574	22575
MEDIUM	22581	22582	22583		
LARGE	22578	22579	22580		

PAK	22501	22502	22503	22504	22505
DUTY	22508	22509	22510	22511	22512

	BLUE	GRAY	GREEN	RED	YELLOW
NEW ADDENDUM	22590	22591	22592	22593	22594

CARABINERS	BLACK	GRAY	COYOTE	YELLOW
LARGE	56216	56222	56217	56218
MINI	56260	56262	56261	56263





NEW BLUE LINE PRODUCTS

The term “thin blue line” was first used in referring to the police by LAPD Chief Bill Parker in the 1950s. In a department produced television show, Parker explained that the purpose of the police was to serve as a barrier (a thin blue line) between the public and anarchy.

Blue Line products are used to express support of the police. They are sometimes carried to commemorate officers who have been killed in the line of duty. The thin blue line symbolizes the relationship of law enforcement with the community it protects from victimization.

ASP Blue Line products pay tribute to the critical role that law enforcement plays in protecting citizens in our society. The police are said to be the “thin blue line” that protects the public and maintains order.



BATON CAP (F SERIES) | 54116



BAND CAP

F SERIES | 52900

T SERIES* | 52901



SAPPHIRE LIGHT | 53565



CHAIN ALUMINUM ULTRA CUFFS | 56006



HINGE ALUMINUM ULTRA CUFFS | 56016



GUARDIAN HANDCUFF KEY

G1 (BLACK CHROME) | 56316

G2 (BLACK CHROME) | 56416

* Compatible with button release batons only



CHALLENGE COIN | 59303



EDGE KNIFE | 56269



SELECT KNIFE | 56239



INVESTIGATOR KNIFE | 56210

PATCHES

HOOK & LOOP

IRON-ON

WHITE ASP EAGLE ON BLACK	59135	59125
SILVER ASP EAGLE ON BLACK	59136	59126
BLACK ASP EAGLE ON WHITE	59137	59127
BLACK ASP EAGLE ON SILVER	59138	59128



BELT	SMALL (28-30)	MEDIUM (32-34)	LARGE (36-38)	XLARGE (40-42)	XXLARGE (44-46)
1.5"	10016	10116	10216	10316	10416
1.75"	10516	10616	10716	10816	10916

BLUE LINE TEE	COTTON	PERFORMANCE
SMALL	09601	09606
MEDIUM	09602	09607
LARGE	09603	09608
XLARGE	09604	09609
XXLARGE	09605	09610



BLUE LINE COTTON TEE



BACK

INSIGNIA

LAPEL PINS



ASP EAGLE | 59203

ASP EAGLE
CERTIFIED | 59206

RED ARROW | 59204

CHALLENGE COIN



CERTIFIED | 59301

UNIFORM BARS

GOLD | 59240
SILVER | 59241

PATCHES



RED ARROW

HOOK & LOOP | 59132
IRON-ON | 59104

SILVER GRAY

HOOK & LOOP | 59111
IRON-ON | 59145

COYOTE

HOOK & LOOP | 59109
IRON-ON | 59142

ASP EAGLE

HOOK & LOOP | 59130
IRON-ON | 59103

SILVER GRAY

HOOK & LOOP | 59110
IRON-ON | 59143

COYOTE

HOOK & LOOP | 59108
IRON-ON | 59140

ASP EAGLE CERTIFIED

HOOK & LOOP | 59131
IRON-ON | 59106

SILVER GRAY

HOOK & LOOP | 59113
IRON-ON | 59144

COYOTE

HOOK & LOOP | 59112
IRON-ON | 59141





Protecting Those Who Protect