



20' BREACH TRAINING CONEX

with RESIDENTIAL and COMMERCIAL TARGETS:



RESIDENTIAL SIDE:

- All-in-One TD8040-BI Gen 2 training door inward swing
- Burglar Door on main door with incorporated cutting station and rebar inserts so door can be cut off
- 32" x 32" Training Window raised 48" from floor
- Reusable grill on window: Rebar inserts across window can be cut, entire frame can be pulled off with vehicle
- 6' x 4' wood "patio" with railings at ground level: Can be rotated in narrow direction to simulate confined space with railings

COMMERCIAL SIDE

- All-in-One TD8040-BI Gen 2 training door outward swing
- Hinge Cutting station next to training door
- 48" x 40" Training Window raised 36" from floor
- Reusable grill on window: Rebar inserts across window can be cut, entire frame can be pulled off with vehicle
- Rebar and chain cutting station
- 6' x 4' wood "patio" at ground level

EXPLOSIVE BREACH TRAINING (SWINGING DOOR END)

- Top & bottom steel pockets 16" on center to mount 2"x 4" wood studs. This allows sheetrock wall to be built or 36" exterior door to be mounted for explosive breach scenarios. *Note: Swinging doors can be closed and locked for storage of items and transport*

CUTTING TRAINING

- Top & bottom steel pockets 16" on center to mount 2"x 6" wood studs. This allows for cutting of simulated roll-up doors, automotive glass, etc.

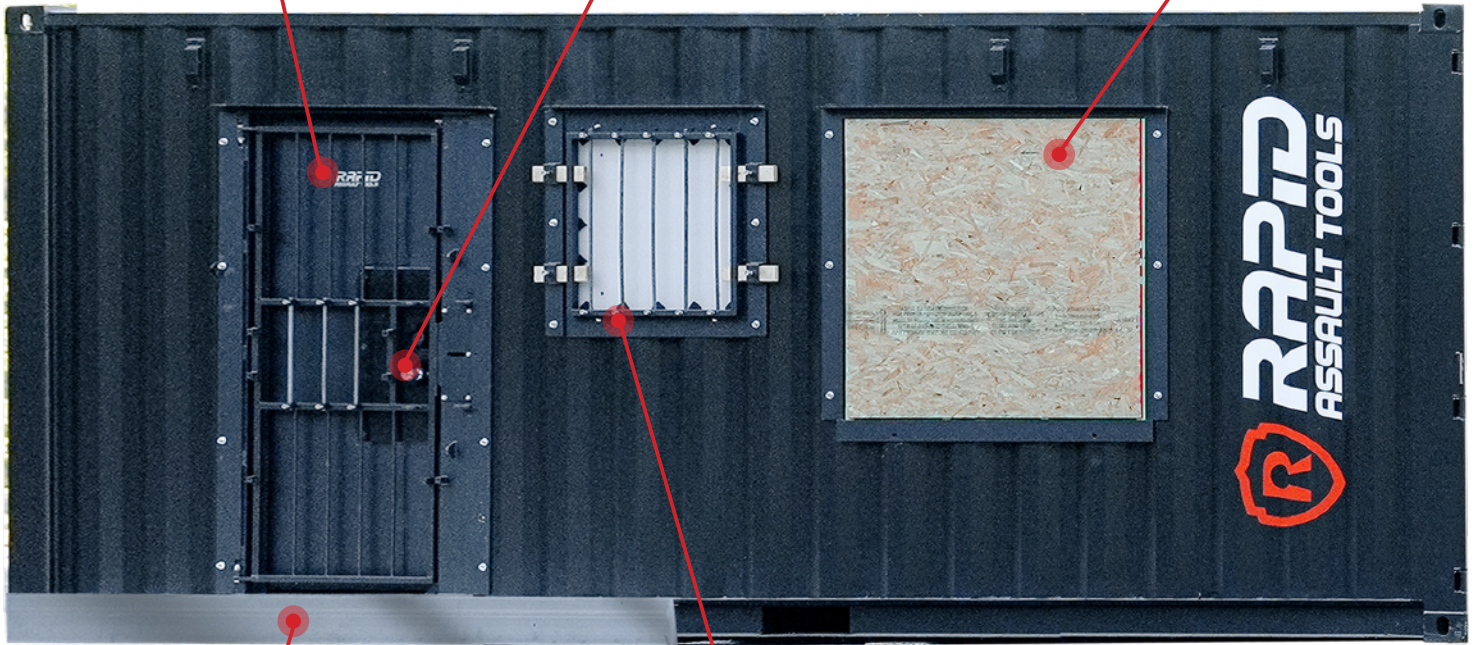




All-in-One TD8040-BI Gen 2 training door inward swing

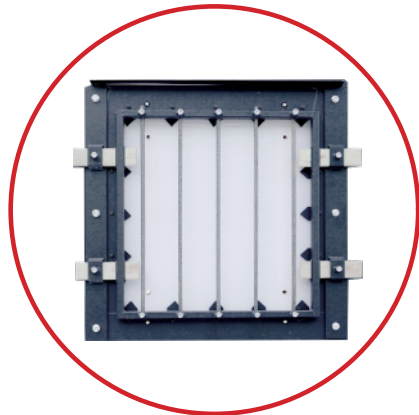
Burglar Door on main door with incorporated cutting station
Rebar insert so door can be cut off

Wall Blast Station

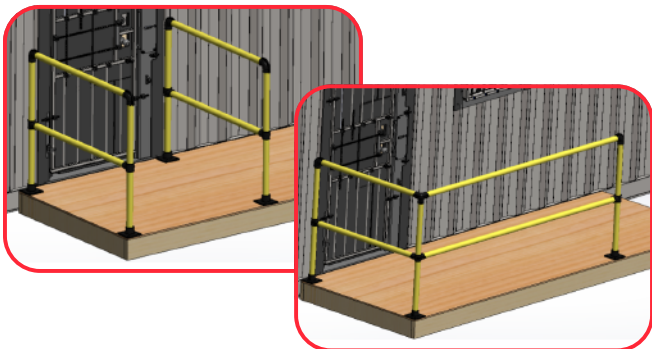


6' x 4' wood "patio" with railings at ground level:
Can be rotated in narrow direction to simulate confined space with railings

32" x 32" Training Window raised 48" from floor



Reusable grill on window:
Rebar inserts across window can be cut, entire frame can be pulled off with vehicle

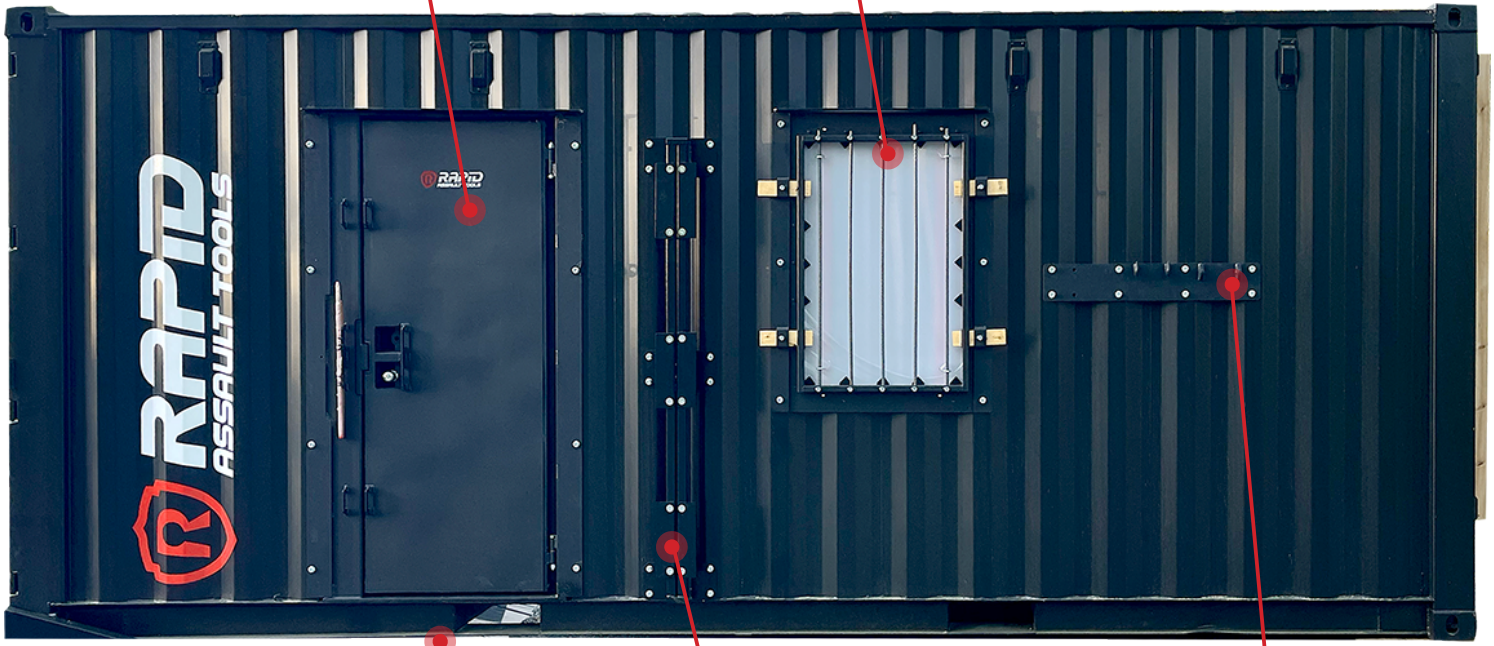


All-in-One TD8040-BI Gen 2 training door outward swing



Reusable grill on window: Rebar inserts across window can be cut, entire frame can be pulled off with vehicle

48" x 40" Training Window raised 36" from floor



6' x 4' wood "patio" at ground level

Hinge Cutting station next to training door

Rebar and chain cutting station

EXPLOSIVE BREACH TRAINING



Top & bottom steel pockets 16" on center to mount 2"x 4" wood studs. This allows sheetrock wall to be built or 36" exterior door to be mounted for explosive breach scenarios.

Note: Swinging doors can be closed and locked for storage of items and transport

CUTTING TRAINING



Top & bottom steel pockets 16" on center to mount 2"x 6" wood studs. This allows for cutting of simulated roll-up doors, automotive glass, etc.

TILT BED CONTAINER TRAILER (OPTIONAL)

Trailer specifically designed to load, transport, and unload 20' containers.

- 24' long 102" wide
- Two 12k pound axles with 14 ply tires and electric brakes
- Hydraulic lift and lower with wireless remote
- 20k pound winch
- Removable side guide rails and knife edge tail for easy loading
- 5/16" gooseneck

